



Blueprint Jordan River: an Eco-Logical approach

Gabe Epperson and Kristine Widner,
Envision Utah



Great Salt Lake

Salt Lake County
Jordan River Vision and
Related Studies

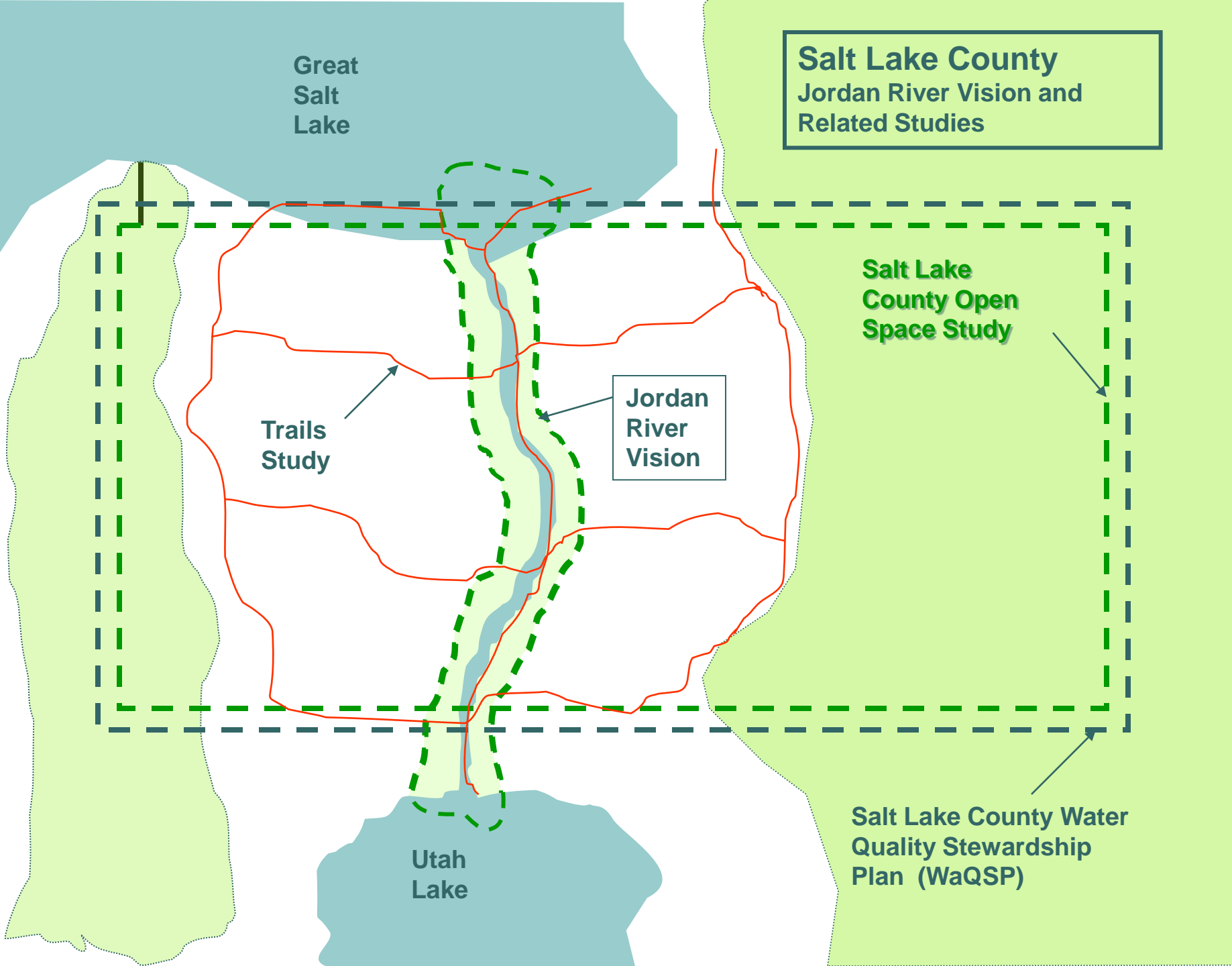
**Salt Lake
County Open
Space Study**

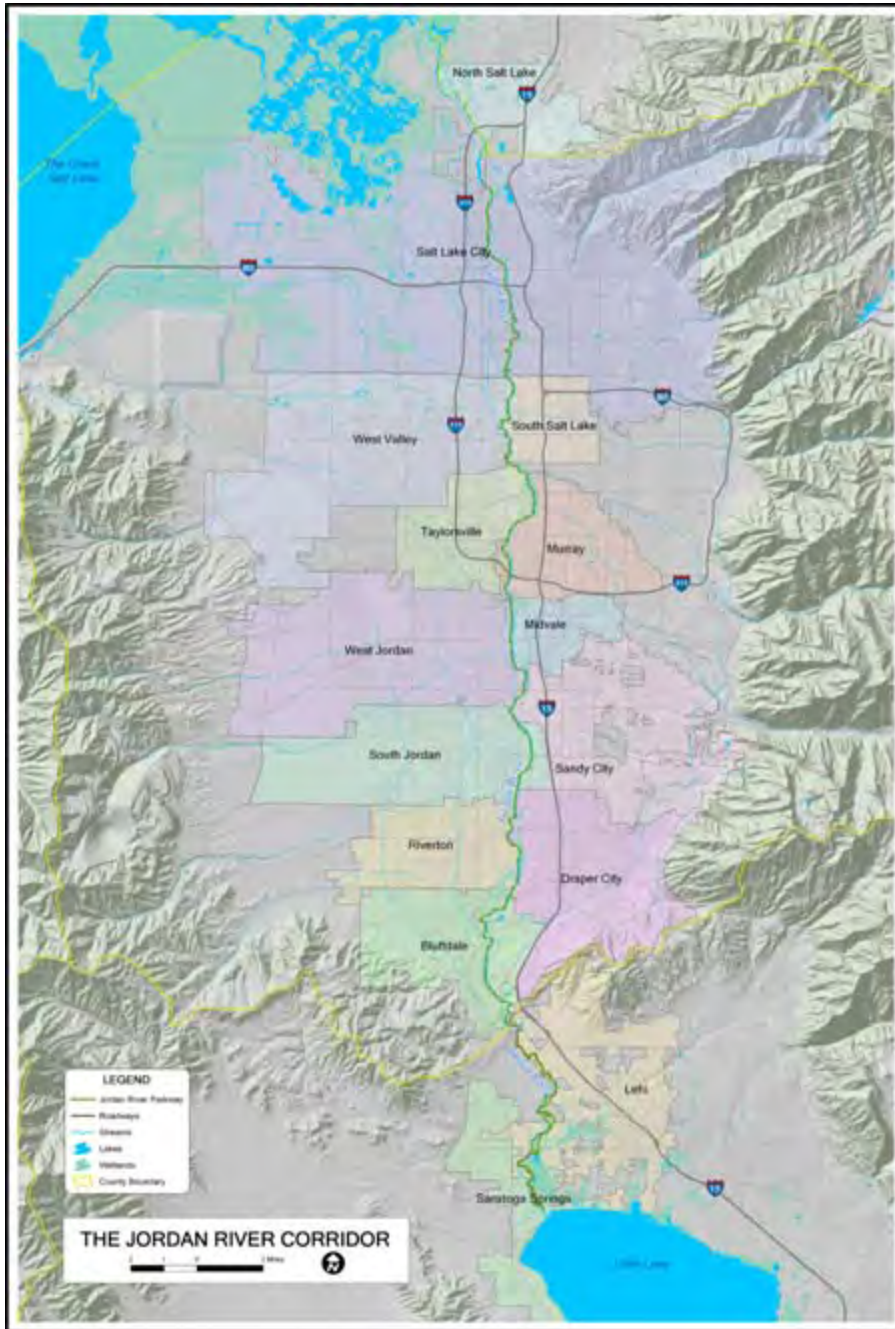
**Trails
Study**

**Jordan
River
Vision**

**Salt Lake County Water
Quality Stewardship
Plan (WaQSP)**

Utah Lake





Partnership with municipalities along the Corridor is critical for success

Communities include:

- Lehi**
- Saratoga Springs**
- Bluffdale**
- Riverton**
- Draper**
- Sandy**
- South Jordan**
- West Jordan**
- Midvale**
- Murray**
- Taylorville**
- West Valley**
- South Salt Lake**
- Salt Lake City**
- North Salt Lake City**
- Salt Lake County**
- Utah County**
- Davis County**

History of channelizing and development has altered the River



THE JORDAN RIVER CORRIDOR IN MURRAY IN 1937 (LEFT) AND IN 1990 (RIGHT)

Jordan River Crossings

Over 50 river crossings (avg. 1/mile)



Bike/Pedestrian Bridge in Lehi

Underpass @ Hwy 201

South Platte River Restoration

● ● ● Denver, CO (\$20 million federal grant)



- 140 acres of new parkland
- Elimination of 250 direct sources of river pollution
- Restored wildlife corridor, native riparian vegetation
- Spurred economic growth in neighboring areas (REI opened flagship store)
- Today more than half of the state's bird species use the river as a habitat
- banks are lined with homes, mixed-use developments and businesses

Providence River Daylighting

Providence, RI



- Day-lighting involved the removal of 1,150 feet of roadway, asphalt, and concrete
- New gondolas, docking platforms
- Created an impressive focal point for the city and the region
- Major economic development generator

Chicago River (\$50 million invested in revitalization)

The Main Branch Riverwalk

Action: The City will develop the Main Branch Riverwalk as a unique urban destination with year-round concessions and amenities that highlight the river as an important natural and cultural resource.

The crown jewel in the Chicago River's system of trails and walkways is the Riverwalk along Wacker Drive on the Main Branch. This reach of the Chicago River is already well known for its stunning views of downtown. Completion of the Main Branch Riverwalk will solidify the river as a major urban destination that is unique to Chicago.

The City will build an accessible river-level walkway from Lake Street to the existing riverwalk east of Michigan Avenue. The walkway will include connections under each bridge to provide for continuous enjoyment of the space, and will incorporate retail, entertainment, dining and recreational activities.



Vietnam Veterans' Memorial Plaza, the first phase of the Main Branch Riverwalk, will be completed in 2005. The complete build-out of the Riverwalk will cost an estimated \$50 million. The Chicago Department of Transportation is currently completing design and engineering work for the remainder of the project.

Provo River Restoration Project

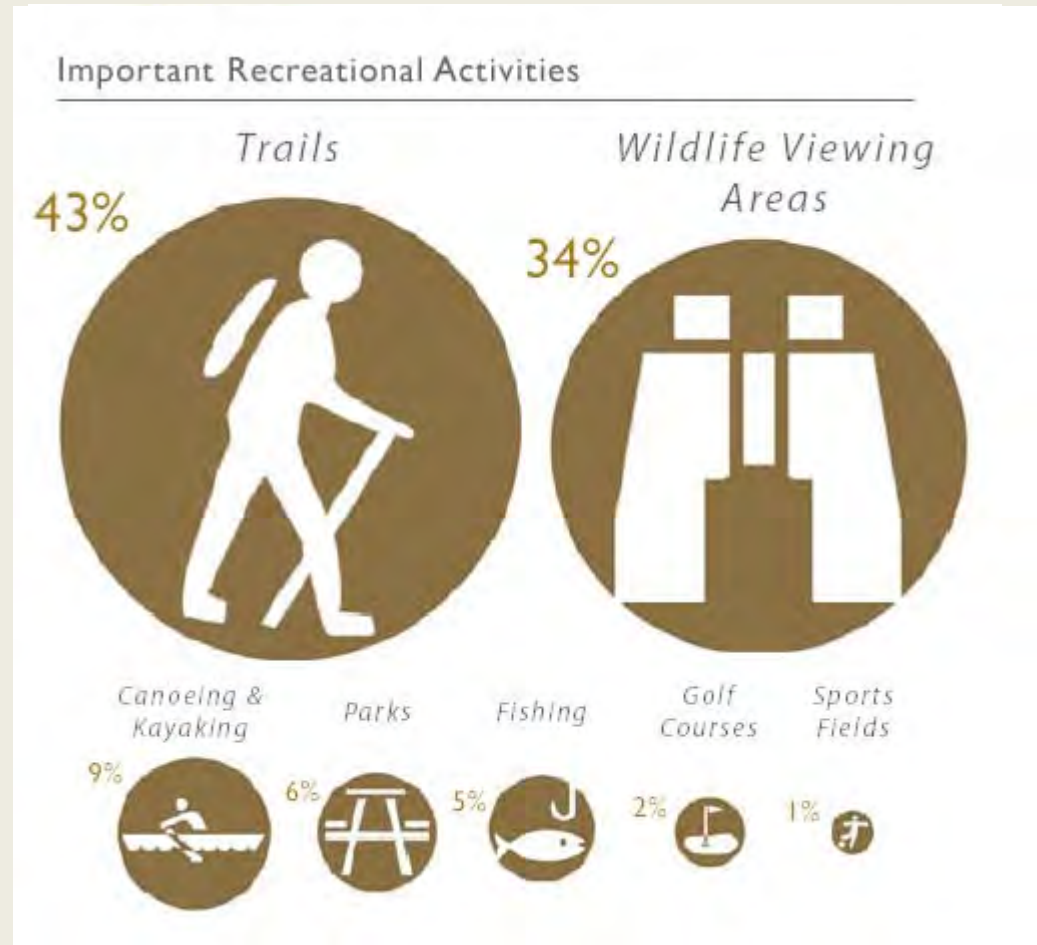
- Created a multiple-thread meandering river channel connected to existing remnants of historic secondary channels, wetland ponds and small side channels.

Long-term project outcomes include:

- a five-fold increase in the trout population
- doubling of the riparian bird population
- diverse native vegetation
- two additional miles of main river channel; and,
- nine additional miles of small side-channel habitats and wetlands



Vision developed through public input:



- 3,000+ residents participated in workshops and on-line surveys



The Vision:





Establish Nature Preserves







Provide Recreational Amenities







Facilitate Urban Renewal





Proposed Jordan River Commission

- Using the Utah Lake Commission as a working case study...
- Implement the Blueprint “Vision” and “Principles”
 - Lake-to-lake trail, nature preserves, recreation amenities, attract tourism, nature centers & education and much more...
- Raise funds for:
 - Purchasing critical lands, restoring wetlands, and capital projects: trails, boat landings, bridges, restrooms, etc.
- Provide input on and review of appropriate design standards for large developments within ½-mile of the River
- Create a forum for informed discussion and input about projects that may impact the River and the Region, such as:
 - water treatment facilities, regional trail systems and transportation projects.



Proposed Jordan River Commission

Board Structure:

1. 2/3 of Board: (20 Reps)
 - elected representatives appointed by each local government
 - State Agencies (DNR, DEQ)
 - Water District (JVWCD)
2. remaining 1/3= other organizations apply for membership and are selected by the governmental entities (if selected, required to contribute dues) (10 Reps)



Acquire open space, restore wetlands, capital improvements...





Provide Recreational Amenities: bridges, boat launches, recreational facilities, etc.





Facilitate Urban Renewal: redevelopment, design standards, capital projects, bridges, boat launches, restoration, etc.





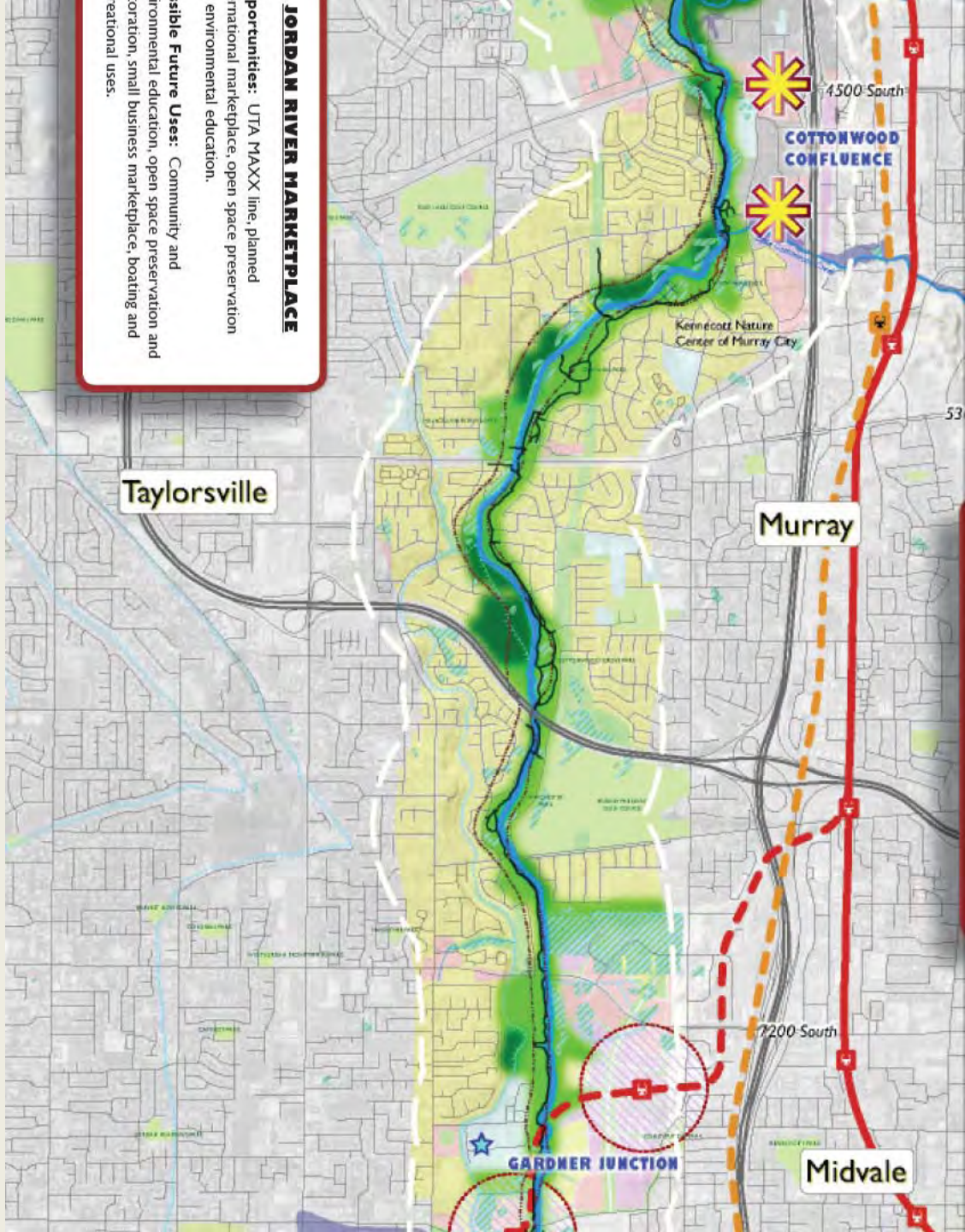
Joining the Commission WILL provide economic benefits to members...

- A Commission increases the ability to attract Federal and private investment
 - Mitigation funds from UTA, UDOT and others, redevelopment, transportation grants, conservation grants from EPA, and more...
- Increased property values
- Increase in tourism and sales tax revenue
- Linking trail to regional transportation systems will reduce traffic and improve health of residents
 - New North Temple, West Valley and Mid-Jordan TRAX stops on the River
 - New Frontrunner Stops near the River in S. Jordan, Draper, and Lehi
 - Trail connections to PRATT, Dimple Dell, Decker Lake, City Creek, Provo River, etc.
 - New DOT bridge crossings in Utah County



...future of the Jordan River

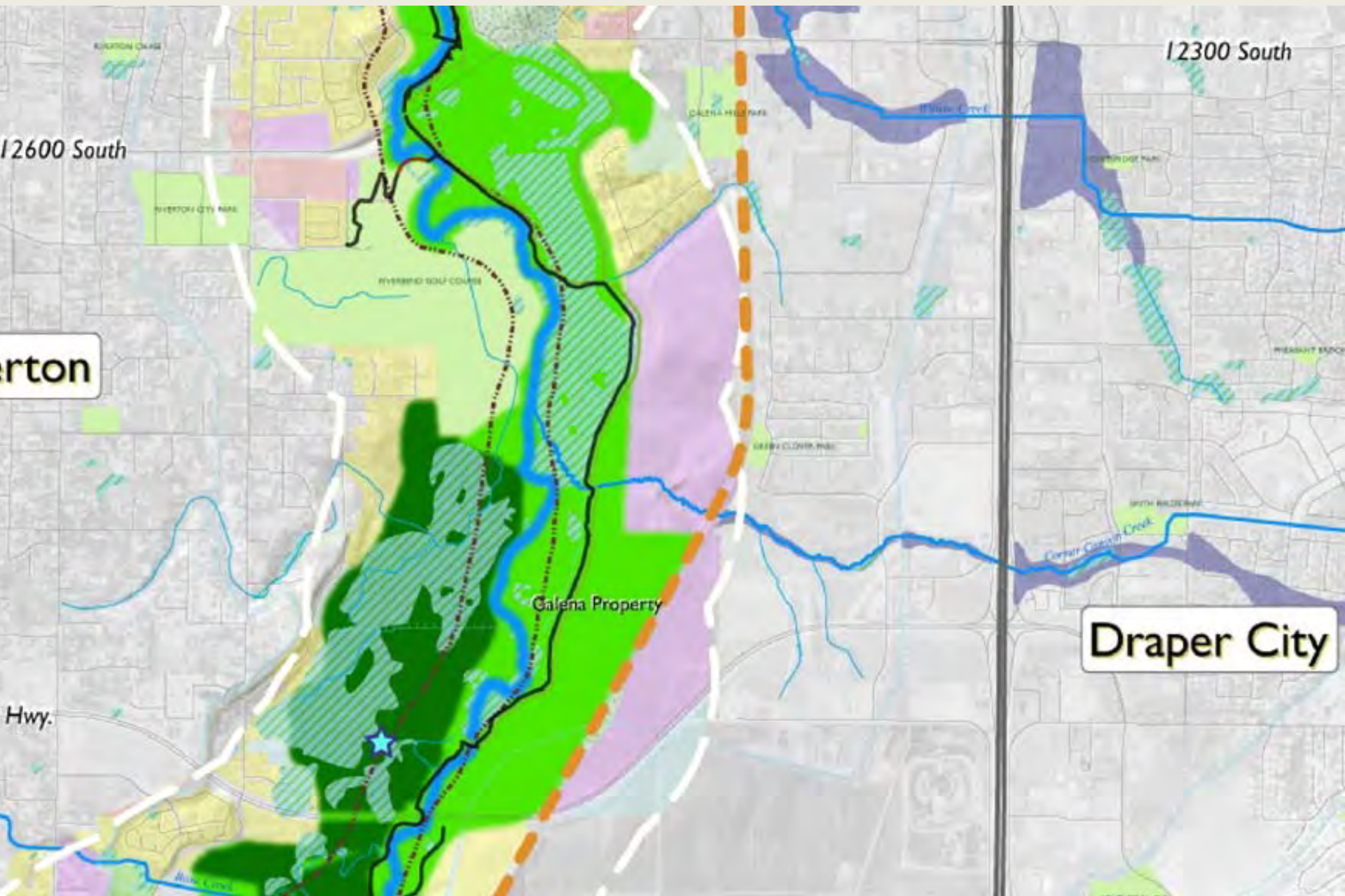




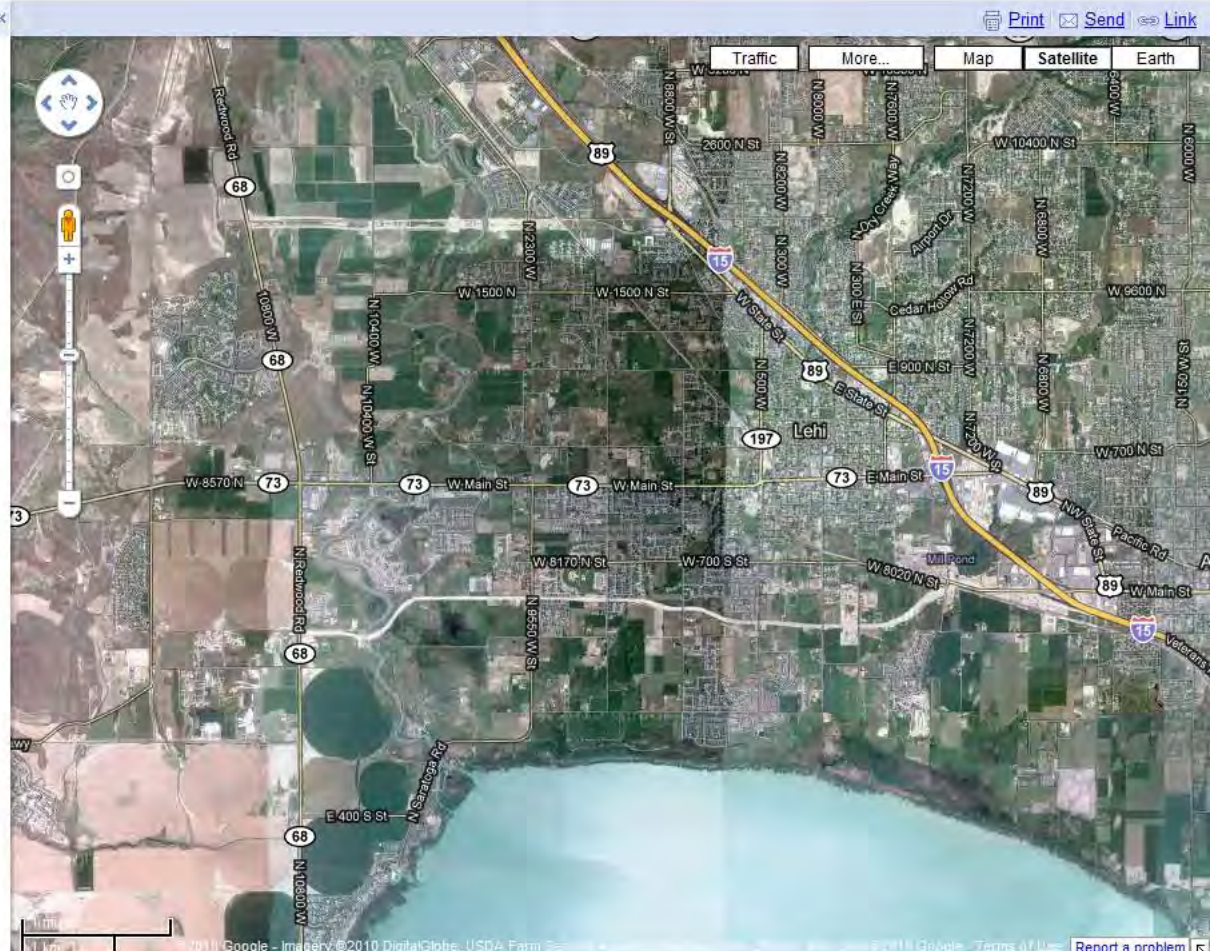
JORDAN RIVER MARKETPLACE

Opportunities: UTA MAXX line, planned recreational marketplace, open space preservation environmental education.

Visible Future Uses: Community and environmental education, open space preservation and recreation, small business marketplace, boating and recreational uses.



Get Directions My Maps
New! Explore all seven continents with Street View.
Set default location
Put your business on Google Maps





Click here to visit the UDOT Web site.

Home | Contact Us

Home Project History Gallery New Interchange

PIONEER CROSSING

(15 TO REDWOOD ROAD)



Contacts

Hotline:
(877) 222-3757

Fax:
(801) 341-6341

Email:
access@utah.gov

Quick Links

Follow us on
Twitter

Mill Pond Closure

Map of Area



October 7, 2010

Nearby Projects

- Access Utah County
- S.R. 92 Lehi to Highland
- Geneva Road
- I-15 CORE
- Mountain View Corridor



Welcome to Pioneer Crossing

On Monday, Aug. 23, Gov. Gary R. Herbert, Congressman Jim Matheson and other dignitaries helped provide the official opening for Pioneer Crossing, a new east-west connector from Redwood Road in Saratoga Springs through Lehi to American Fork. Opening at the same time was the new, state-of-the-art Diverging Diamond Interchange with I-15 at American Fork Main Street, and some improvements to American Fork Main Street between I-15 and U.S. 89 (State Street).

Pioneer Crossing is a transportation response to the tremendous growth that has taken place in northern Utah County during the past decade. Projections indicate it will continue for the next several years. The project, now considered to be "substantially complete," includes:

- Pioneer Crossing, a new, five-lane **urban arterial** from Redwood Road in Saratoga Springs to 300 East in Lehi.
- Seven lanes of Pioneer Crossing from 300 East in Lehi to American Fork Main Street.
- A new **diverging diamond interchange (DDI)** at

CLICK HERE TO TEST DRIVE THE NEW

Diverging Diamond Interchange

Current Status

99%

of construction is completed

Current Activities

Please note: Schedule changes and additions to this



Interactive Project Map



Point of Interest **Pioneer Crossing** **I-15**

Section 1
Jordan River Area

Section 2
1700 West Area

Section 3
500 West Area

Section 4
Mill Pond/I-15 Area

Click section to view project detail or drag highlighted area.

PIONEER **Interactive Project Map** **ACCESS**



To connect Pioneer Crossing to Redwood Road, UDOT is building a new bridge over the Jordan River. As part of the bridge construction, the Jordan River Parkway Trail will cross under the road.

Jordan River Area SECTION 2 1700 West Area SECTION 3 500 West Area Mill Pond/I-15 Area

Click section to view project detail or drag highlighted area.



PIONEER **Interactive Project Map** **ACCESS**



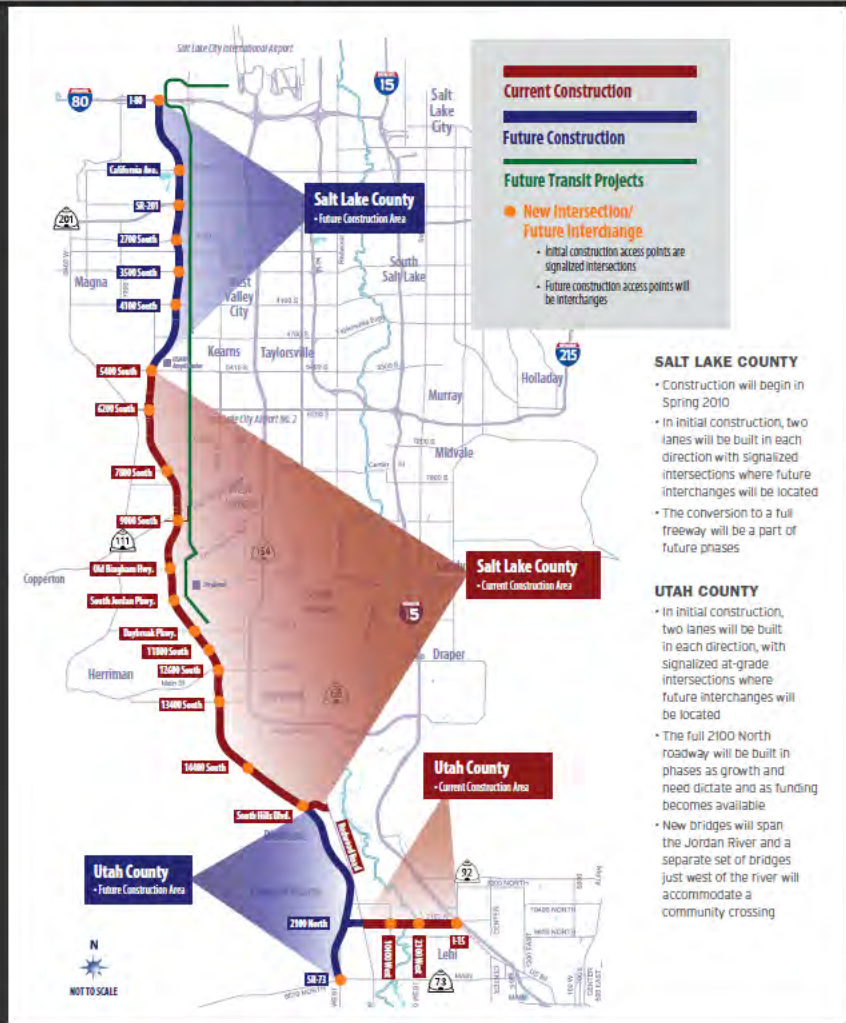
Close Window

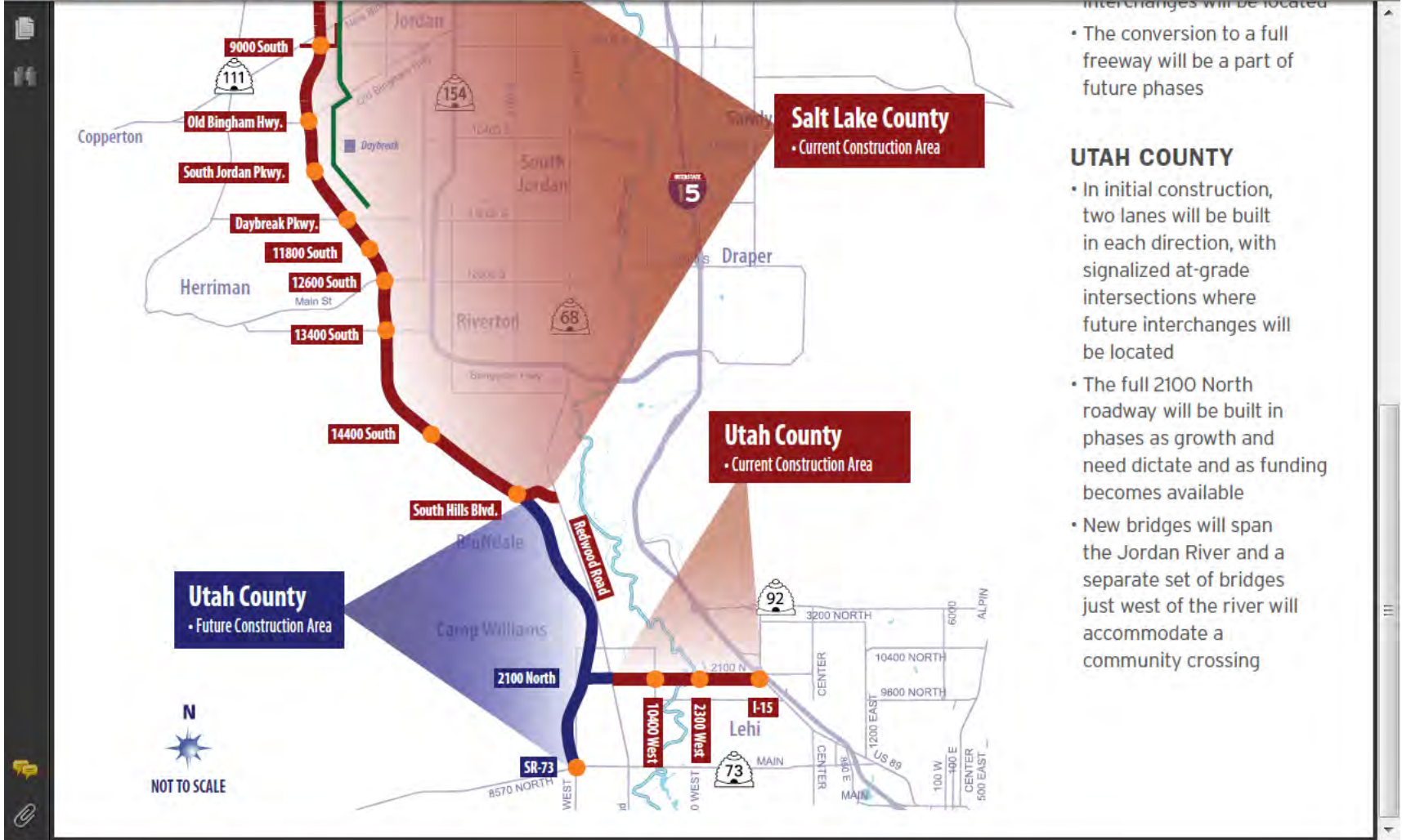
The bridge over the Jordan River will be wide enough to carry four travel lanes, a center median and a sidewalk. The Jordan River Parkway Trail will cross under Pioneer Crossing, allowing trail-goers to pass safely.

Jordan River Area	1700 West Area	500 West Area	Mill Pond/1-15 Area
-------------------	----------------	---------------	---------------------

Click section to view project detail or drag highlighted area.







interchanges will be located

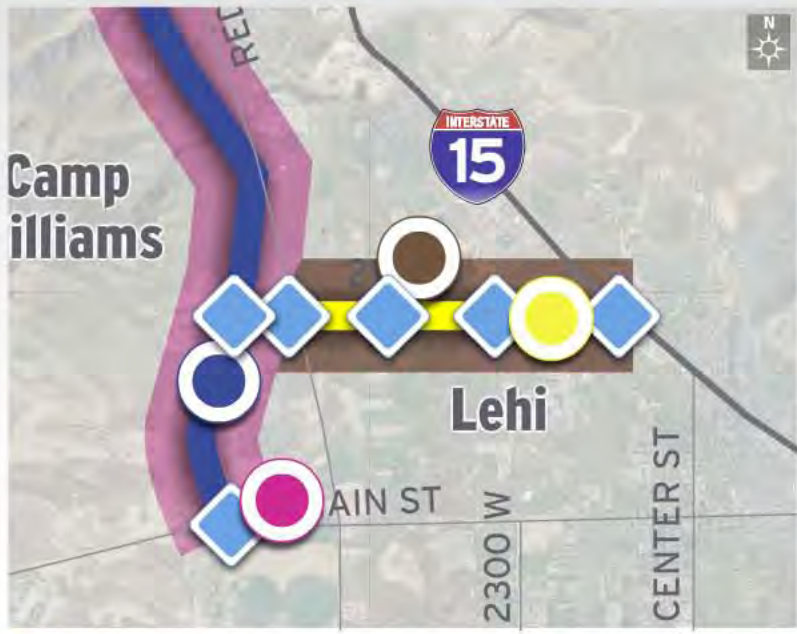
- The conversion to a full freeway will be a part of future phases

UTAH COUNTY

- In initial construction, two lanes will be built in each direction, with signalized at-grade intersections where future interchanges will be located
- The full 2100 North roadway will be built in phases as growth and need dictate and as funding becomes available
- New bridges will span the Jordan River and a separate set of bridges just west of the river will accommodate a community crossing

MOUNTAIN VIEW CORRIDOR MVC HOME PAGE

MAIN MAP | SALT LAKE COUNTY | UTAH COUNTY | ROADWAY DESIGN ILLUSTRATIONS | CURRENT CONSTRUCTION AREAS



LEGEND	TOGGLE ICONS
Intersection/Interchange	Transit Project
Outside Lanes	Trail System
Frontage Road	Number of Lanes

UTAH COUNTY

In northern Utah County, MVC will help alleviate current east-west congestion by connecting Redwood Road (S.R. 68) to I-15 at 2100 North in Lehi.

During initial construction, two, one-way roads will be built by reconstructing and extending 2100 North. Each of the new roads will include two lanes of traffic and signalized intersection at future interchange locations.

The project will also include new bridges: a set spanning the Jordan River and a separate set just west of the river to allow a future trail and city road to cross under 2100 North.

Initial construction began in January 2010 and will be completed in 2011. In the future, additional lanes may be built as growth and need dictate and as funding becomes available. The right-of-way needed for a full freeway build-out will be preserved.

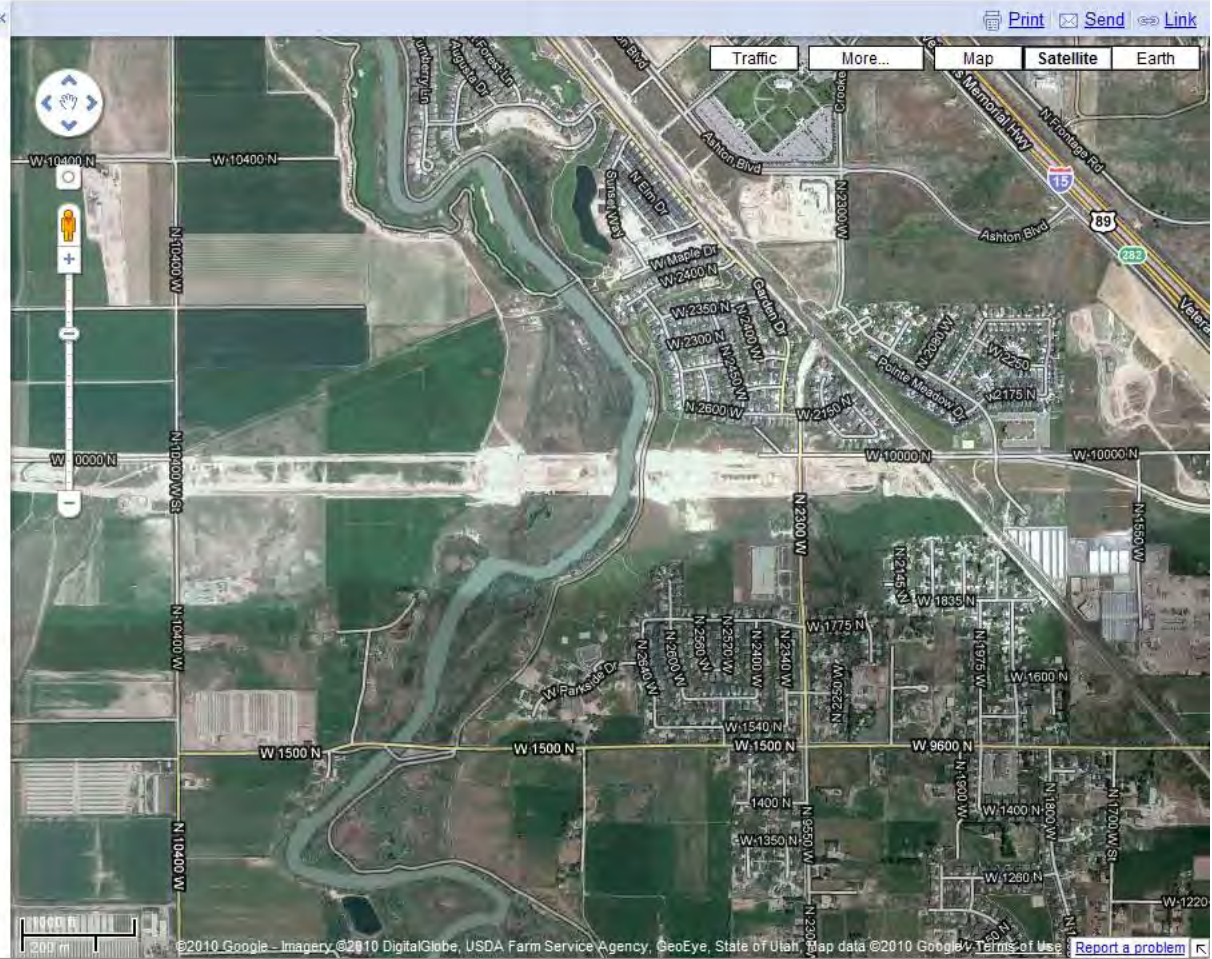
CURRENT CONSTRUCTION AREAS (Yellow bar)

FUTURE PROJECTS (Blue bar)

MAP INDEX | MVC TIMELINE

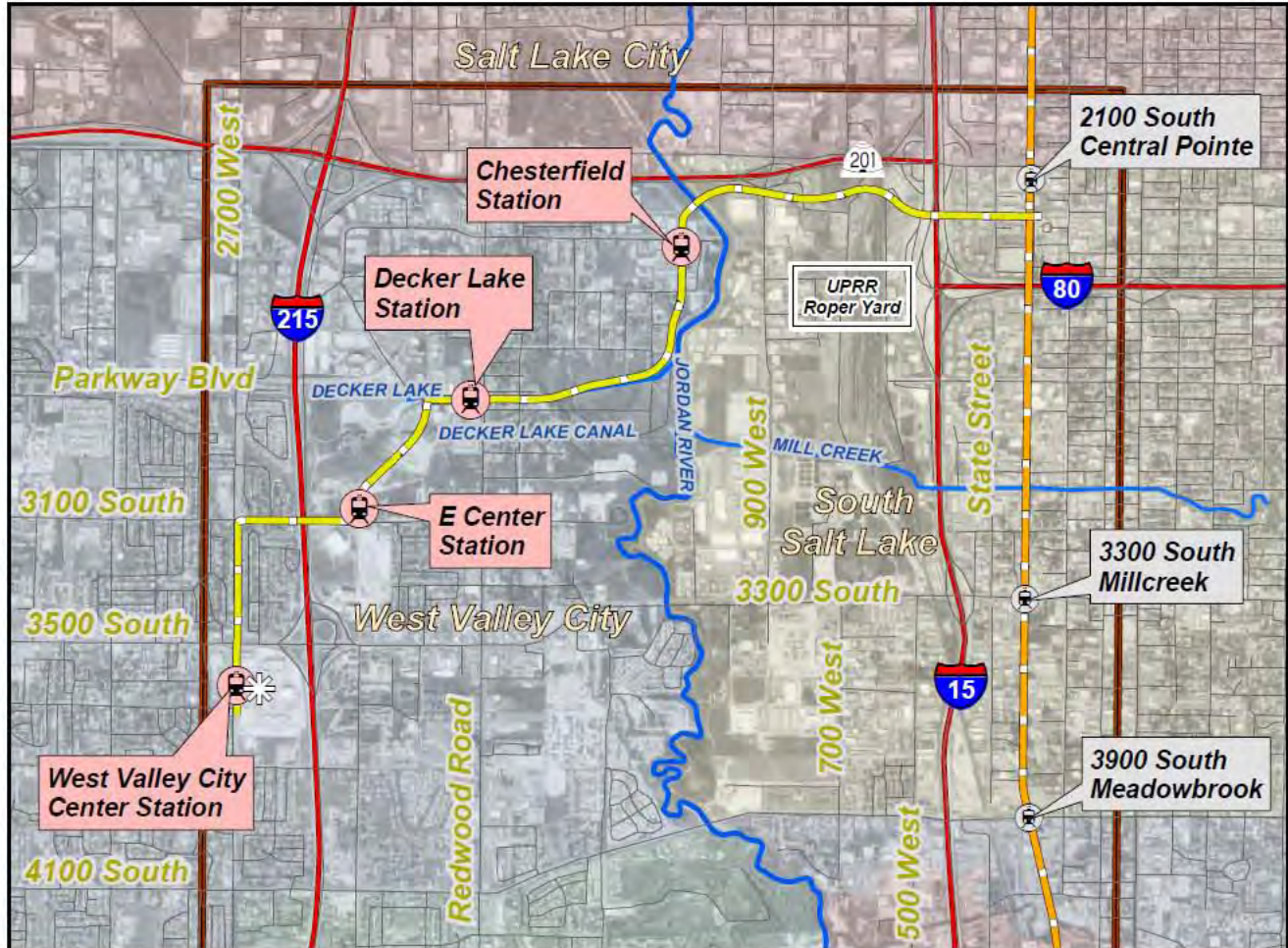
ZOOM (+/-)

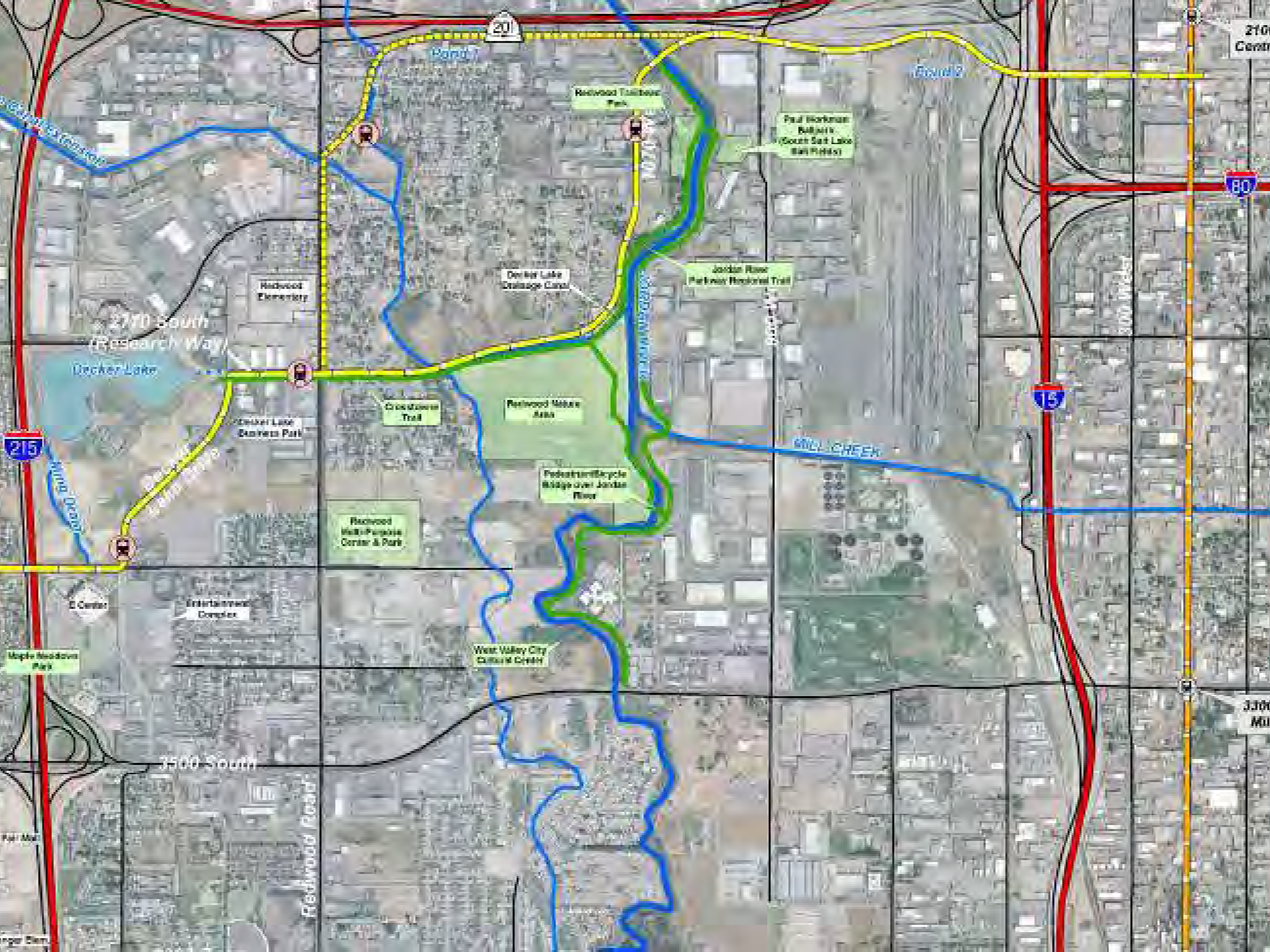
Get Directions My Maps
New! Explore all seven continents with Street View.
Set default location
Put your business on Google Maps



Get Directions My Maps
New! Explore all seven continents with Street View.
Set default location
Put your business on Google Maps







2100
Centr

201

Pond 1

Pond 2

Redwood Trailblazer
Park

Paul Horbanek
Ballpark
(South Salt Lake
Ball Field)

80

Jordan River
Parkway Regional Trail

Ducker Lake
Swanage Canal

Redwood
Elementary

2700 South
(Research Way)

Ducker Lake

Ducker Lake
Business Park

Crossroads
Trail

Redwood Mobile
Area

Pedestrian/Bicycle
Bridge over Jordan
River

REDWOOD CREEK

Redwood Hall-Purpose
Center & Park

15

15

E Center

Entertainment
Complex

Maple Hill Drive
Park

West Valley City
Cultural Center

3300
Mu

2500 South

Redwood Road

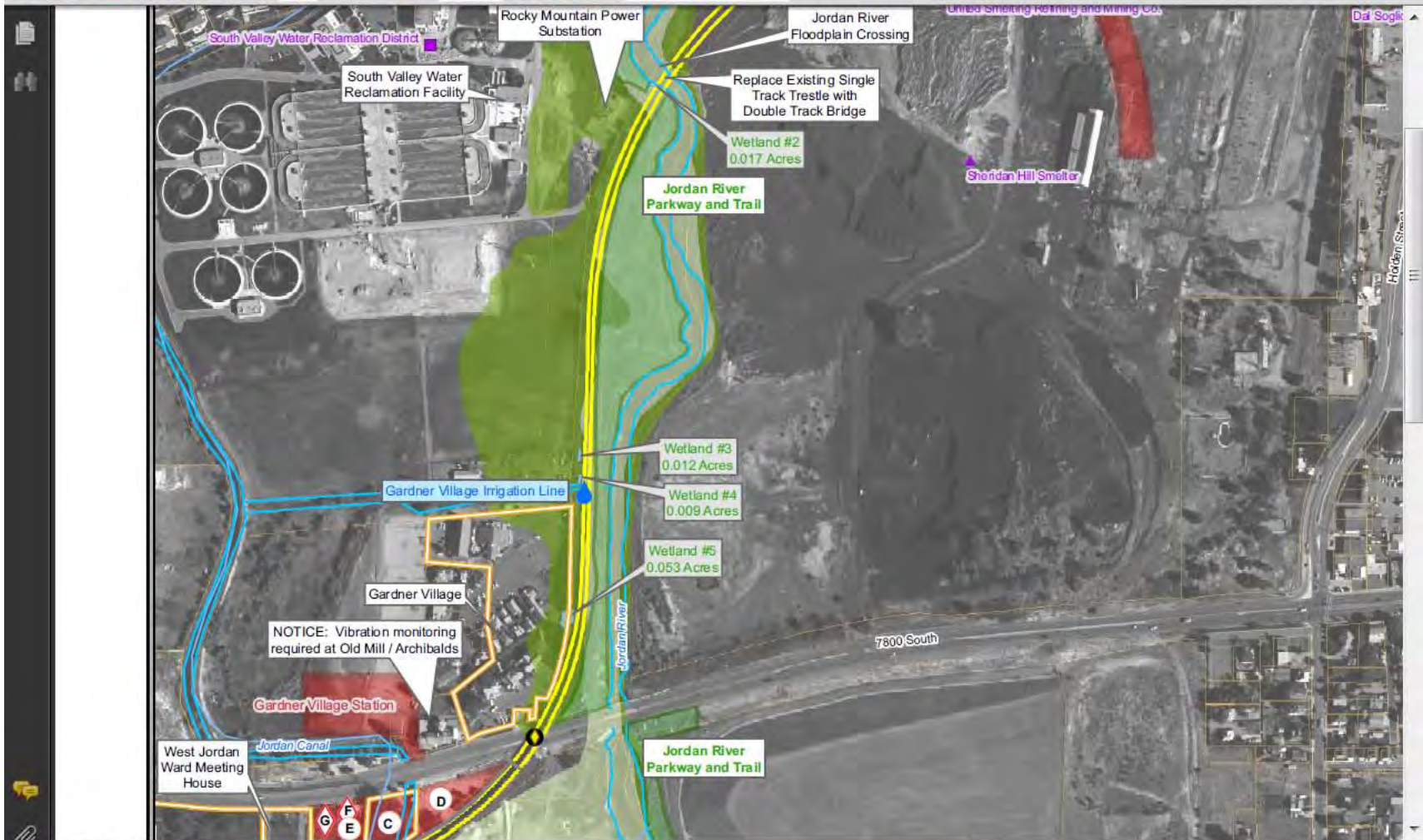
Get Directions My Maps
New! Explore all seven continents with Street View.
Set default location
Put your business on Google Maps



Get Directions My Maps
New! Explore all seven continents with Street View.
Set default location
Put your business on Google Maps







Get Directions My Maps
New! Explore all seven continents with Street View.
Set default location
Put your business on Google Maps

