

SR-39 ROTOMILL AND OVERLAY BETWEEN SR-158 (MP 13.792) AND SR-167 (MP 17.702) (27' ROW ASSESSED) - 12/09/2011

HYDROLOGY

WATERSHEDS

Watersheds Intersected:

Wheeler Creek-Ogden River : 0.1 acres

Pineview Reservoir-South Branch South Fork Ogden River : 12.8 acres

TOTAL: 12.8 acres

STREAMS

Streams: 151.6 feet

Tier I: Stream and Buffer: 0.3 acres

Tier II: Intermediate Buffer Zone: 0.5 acres

Tier III: Outer Buffer Zone: 1.3 acres

TOTAL: 2.1 acres

CANALS

Tier II: Canal and Buffer: 0.1 acres

TOTAL: 0.1 acres

LAKES

Tier II: Intermediate Buffer Zone: 0.3 acres

Tier III: Outer Buffer Zone: 2.7 acres

TOTAL: 3.0 acres

WETLANDS

Tier I: Wetland and Buffer: 1.0 acres

Tier II: Intermediate Buffer Zone: 1.5 acres

Tier III: Outer Buffer Zone: 3.1 acres

TOTAL: 5.6 acres

WATER QUALITY

Tier I: Source Protection Zone: 11.5 acres

Tier II: Primary Recharge Zone: 5.0 acres

TOTAL: 16.6 acres

ECOLOGY

WILDLIFE CONSERVATION SPECIES

Tier I: Federally Protected Species: 1 wildlife conservation species

Tier II: State Protected Species: 1 wildlife conservation species

Tier III: At-risk Wildlife Species: 1 wildlife conservation species

TOTAL: 3 wildlife conservation species

Federally Protected Species

Greater Sage-grouse

State Protected Species

Bald Eagle

At-risk Wildlife Species

Bonneville Cutthroat Trout

WILDLIFE CONNECTIVITY ACROSS UTAH HIGHWAYS

Tier III: Moderate Priority: 20,737.2 feet

TOTAL: 20,737.2 feet

ENVIRONMENTAL HAZARDS

HAZARDOUSE WASTE SITES

Tier II: Secondary Buffer Zone: 0.0 acres

TOTAL: 0.0 acres

Hazardouse Waste Sites Intersected: 1 LUST Tank

OPEN SPACE

PRIME FARMLAND

Tier I: Prime Farmland: 2.0 acres

Tier II: Prime Farmland with 1 Condition: 2.0 acres

TOTAL: 4.0 acres

OPEN SPACE

Tier I: Section 4(f) Implications: 64.0 acres

TOTAL: 64.0 acres

LAND USE

LAND USE

Land Use Intersected:

Agriculture : 3.1 acres

Commercial/Industrial : 0.6 acres

Residential : 1.1 acres

TOTAL: 4.7 acres

LAND DEVELOPMENT

Land Development Intersected:

Developed, Open Space - Low Intensity : 5.8 acres

TOTAL: 5.8 acres

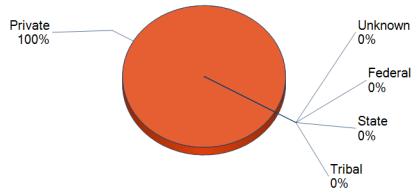
PARCELS

ROW Acreage: 12.8 acres

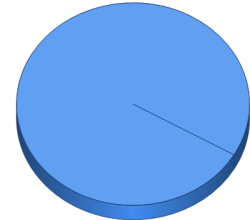
Parcel Acreage: 12.8 acres

Number of Parcels: 17

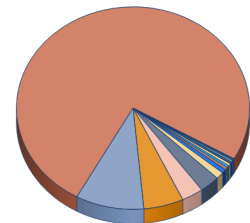
Parcel Distribution:



Federal: 0.0 acres



Private: 12.8 acres



REPORT DETAILS

PEL SYSTEMS EVALUATED BY REPORT

- Agricultural Protection Areas -- LIMITED EXTENT
- Air Quality
- Archeological Sites
- Canals
- Conservation & Mitigation
- Floodplains -- LIMITED EXTENT
- Hazardous Waste Sites
- Historic Districts
- Historic Sites
- Impaired Waters -- LIMITED EXTENT
- Lakes
- Lakes - Programmatic Mitigation
- Land Development
- Land Use
- Open Space
- Paleontological Sensitivity
- Parcels
- Parks
- Prime Farmland -- LIMITED EXTENT
- Rare Plants
- Solid Waste Sites
- Streams
- Streams - Programmatic Mitigation
- Tribal Land
- Water Quality
- Watersheds
- Wetlands - NWI / WRLU -- LIMITED EXTENT
- Wetlands - NWI Programmatic Mitigation -- LIMITED EXTENT

Wetlands - SWReGAP

Wildlife Connectivity Across Utah Highways

Wildlife Conservation Species

SR-39 ROTOMILL AND OVERLAY BETWEEN SR-158 (MP 13.792) AND SR-167 (MP 17.702)



CRITICAL NATURAL ENVIRONMENT MAP

LEGEND

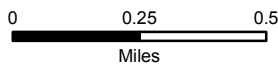
State-Wide Index Map



Current map location highlighted in red

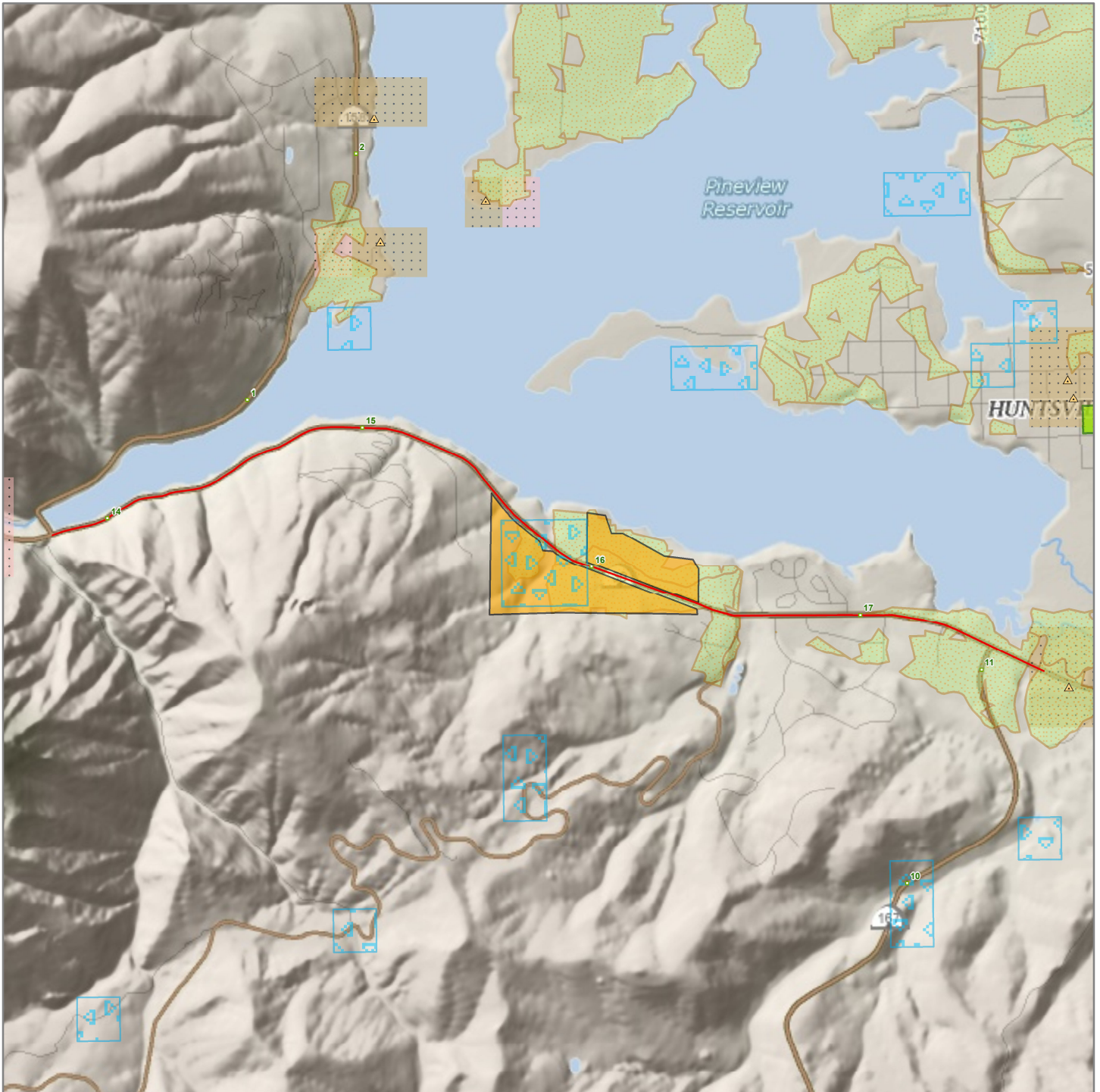


1:44,400



- | | | |
|------------------|-----------------------------------|-----------------------------------|
| Mileposts | Wildlife Conservation Species | Canal Buffers |
| Project | Rare Plants | Lake & Streams Buffers |
| Streams & Canals | Wetlands | Tier 1 |
| Lakes | Conservation and Mitigation Areas | Tier 2 |
| Impaired Waters | Water Quality Buffers | Tier 3 |
| | Floodplains | Wetlands Buffer |
| | | Tier 1 |
| | | Tier 2 |
| | | Tier 3 |

SR-39 ROTOMILL AND OVERLAY BETWEEN SR-158 (MP 13.792) AND SR-167 (MP 17.702)



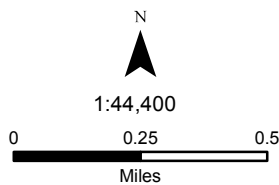
CRITICAL BUILT ENVIRONMENT MAP

LEGEND

State-Wide Index Map



Current map location highlighted in red



- | | | |
|-----------------------|-------------------------------|--------------------------------|
| Project | Historic Districts | Parks |
| Mileposts | Archeological Sites | Solid Waste Buffers |
| Historic Sites | Paleontological Sensitivity | Tier 2 |
| Solid Waste Sites | Tribal Lands | Tier 3 |
| Hazardous Waste Sites | Agricultural Protection Areas | Hazardous Waste Buffers |
| | Prime Farmland | Tier 1 |
| | | Tier 2 |