



## I-75 Corridor Conservation Plan

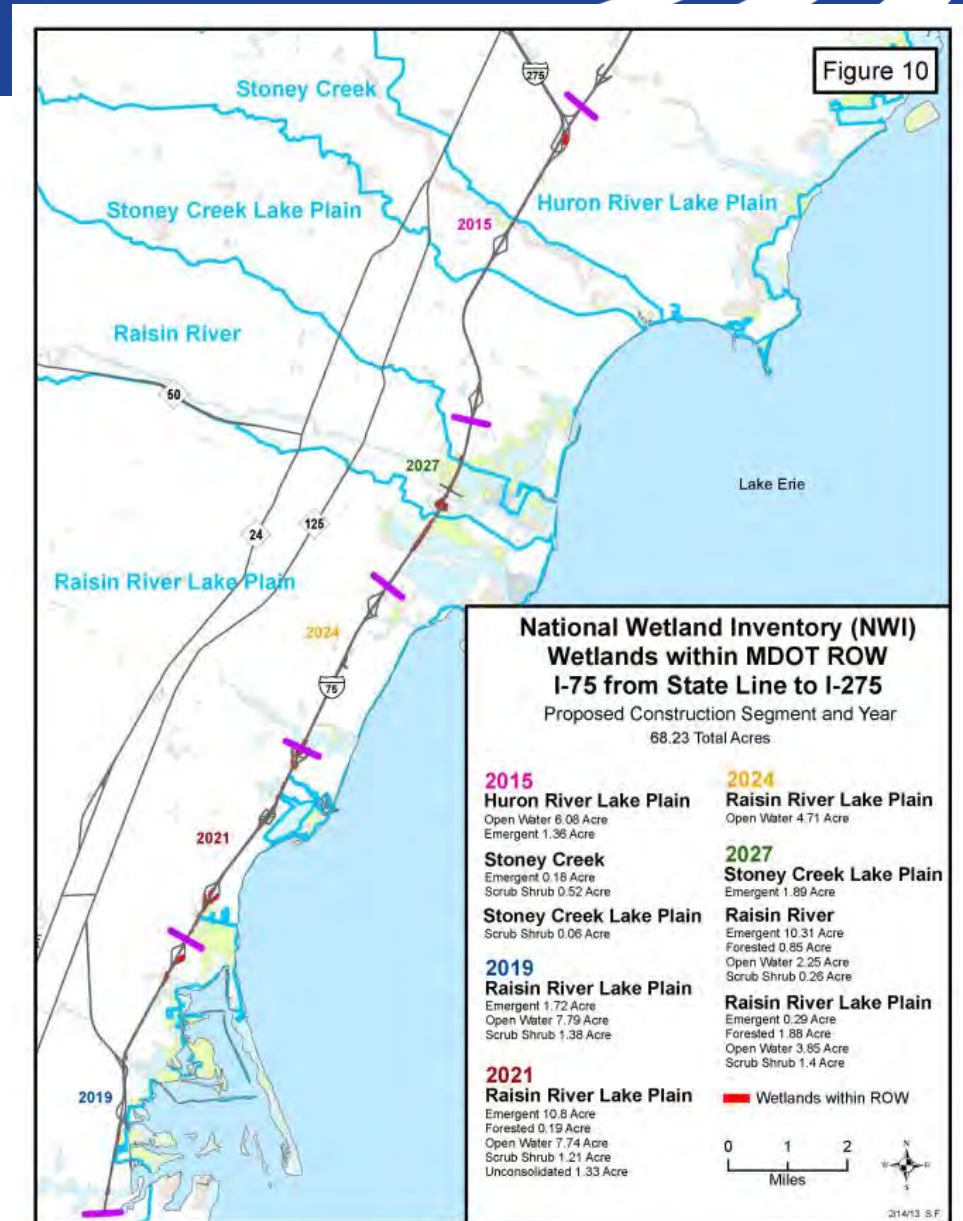
June 25, 2014

Margaret Barondess  
Manager, Environmental Services Section



# I-75 Reconstruction

- Busiest truck route
- Aging pavement
- \$500 million
- Total reconstruction
- 5 phases



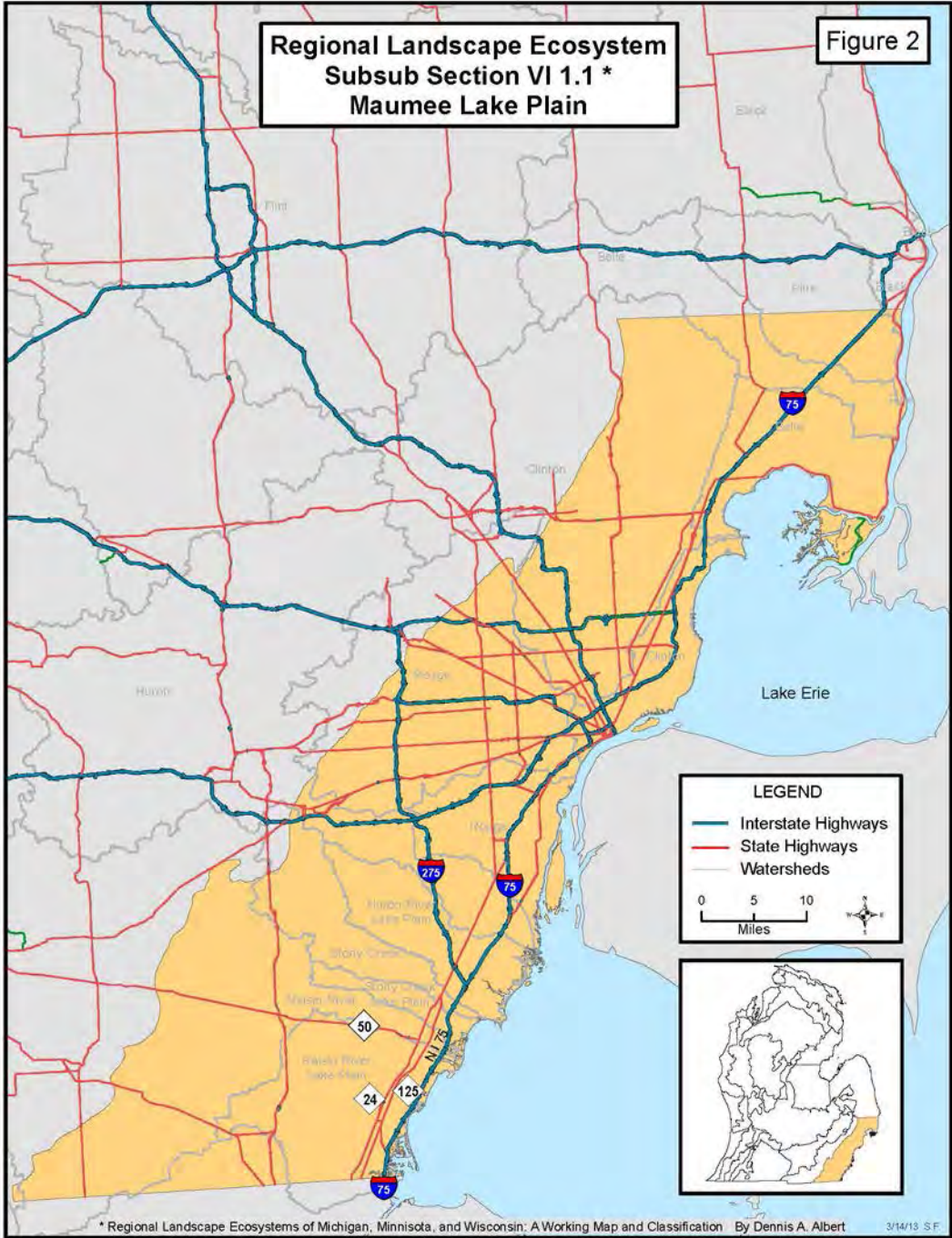
# Goal of the Project

- To develop and implement a Collaboratively-based Landscape Scale Conservation Plan that facilitates rebuilding the I-75 Corridor while maximizing conservation and restoration outcomes in the region.



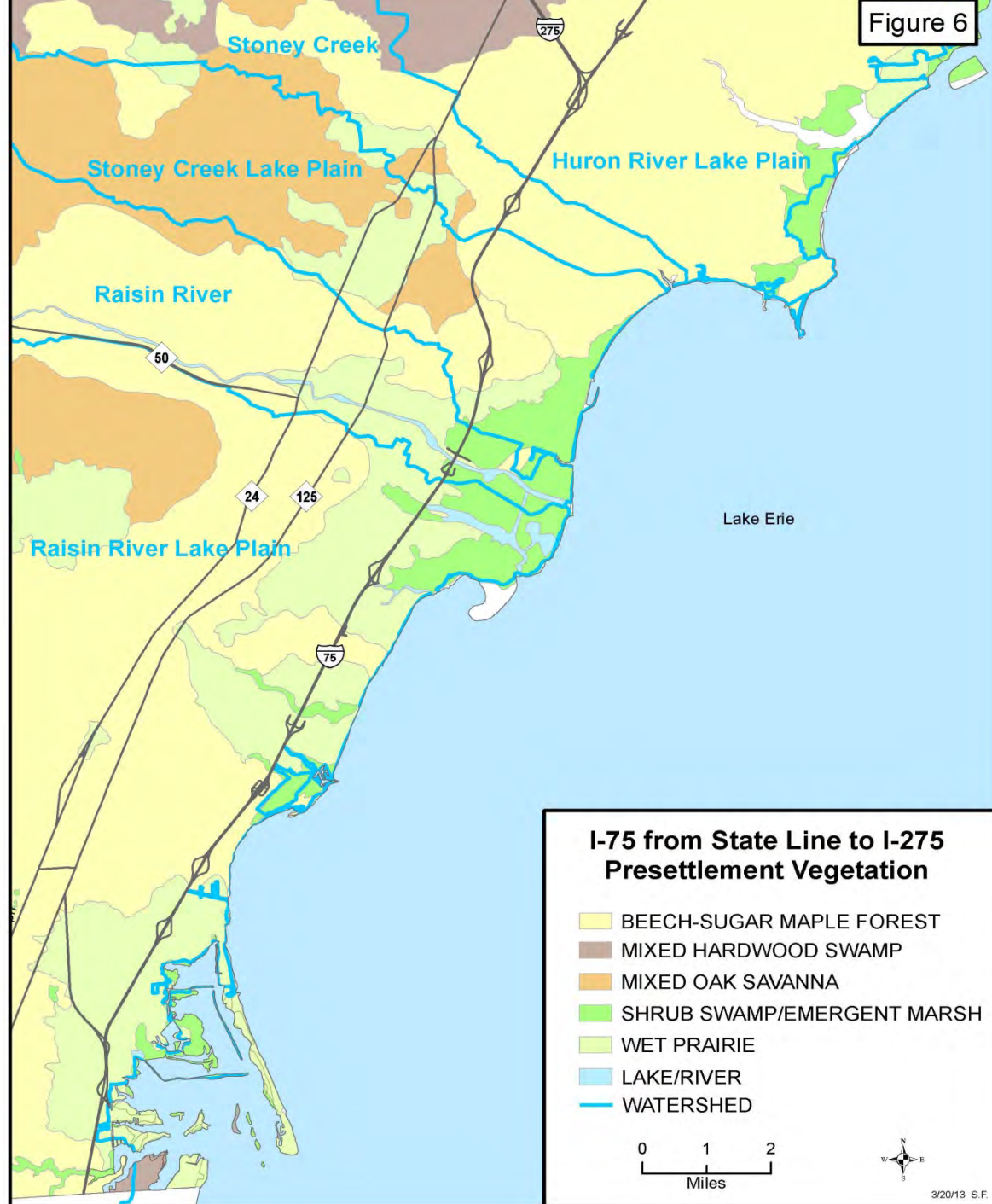
**Regional Landscape Ecosystem  
Subsub Section VI 1.1 \*  
Maumee Lake Plain**

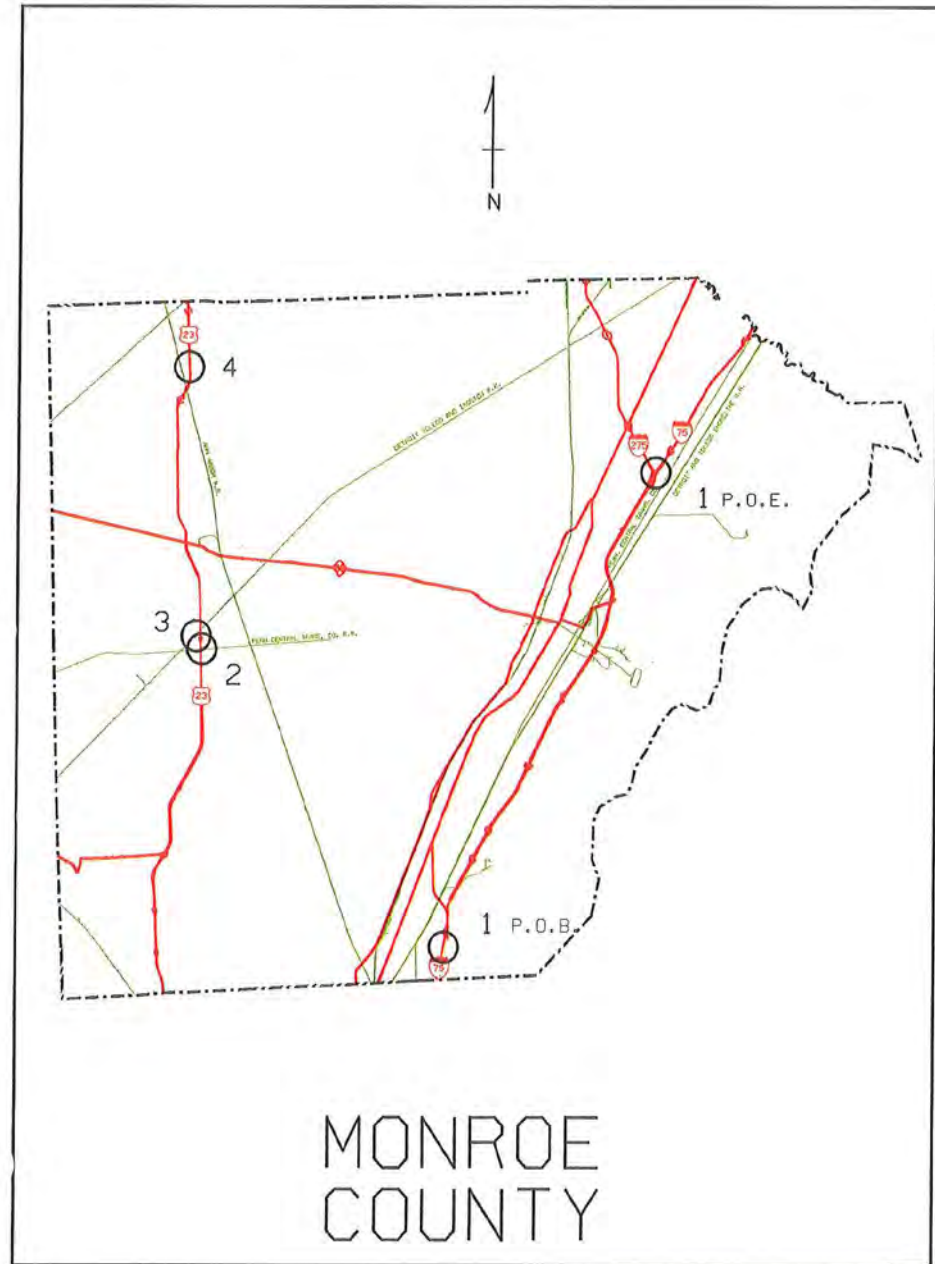
**Figure 2**

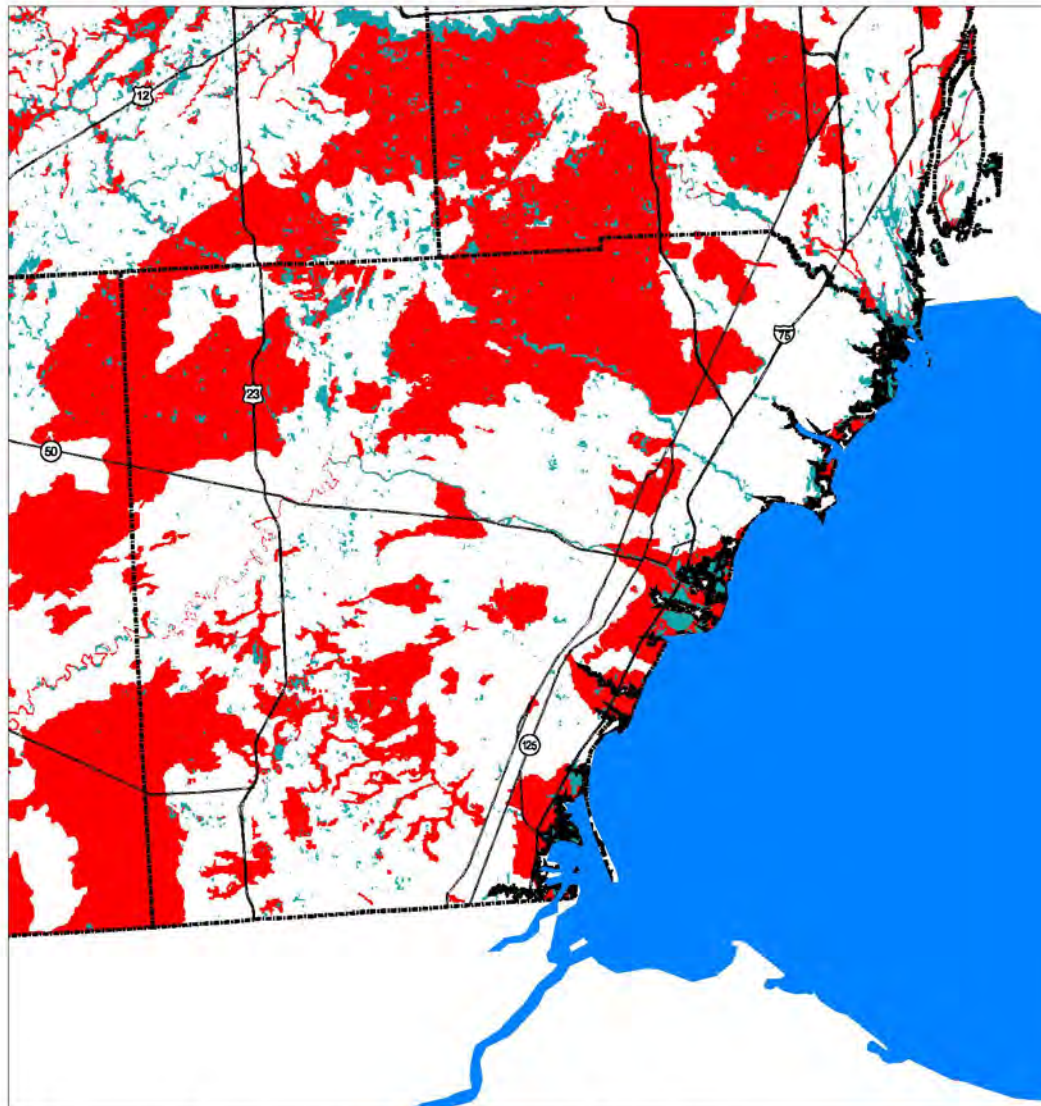


\* Regional Landscape Ecosystems of Michigan, Minnesota, and Wisconsin: A Working Map and Classification By Dennis A. Albert 3/14/13 S.F.

Figure 6







## Changes in Wetland, 1800s - 1980s

### Monroe County

■ Wetland lost since the 1800s

■ Wetland, no change

Major Roads

County Lines



0 0.6 1.2 1.8 2.4 Miles



MICHIGAN STATE  
UNIVERSITY  
EXTENSION

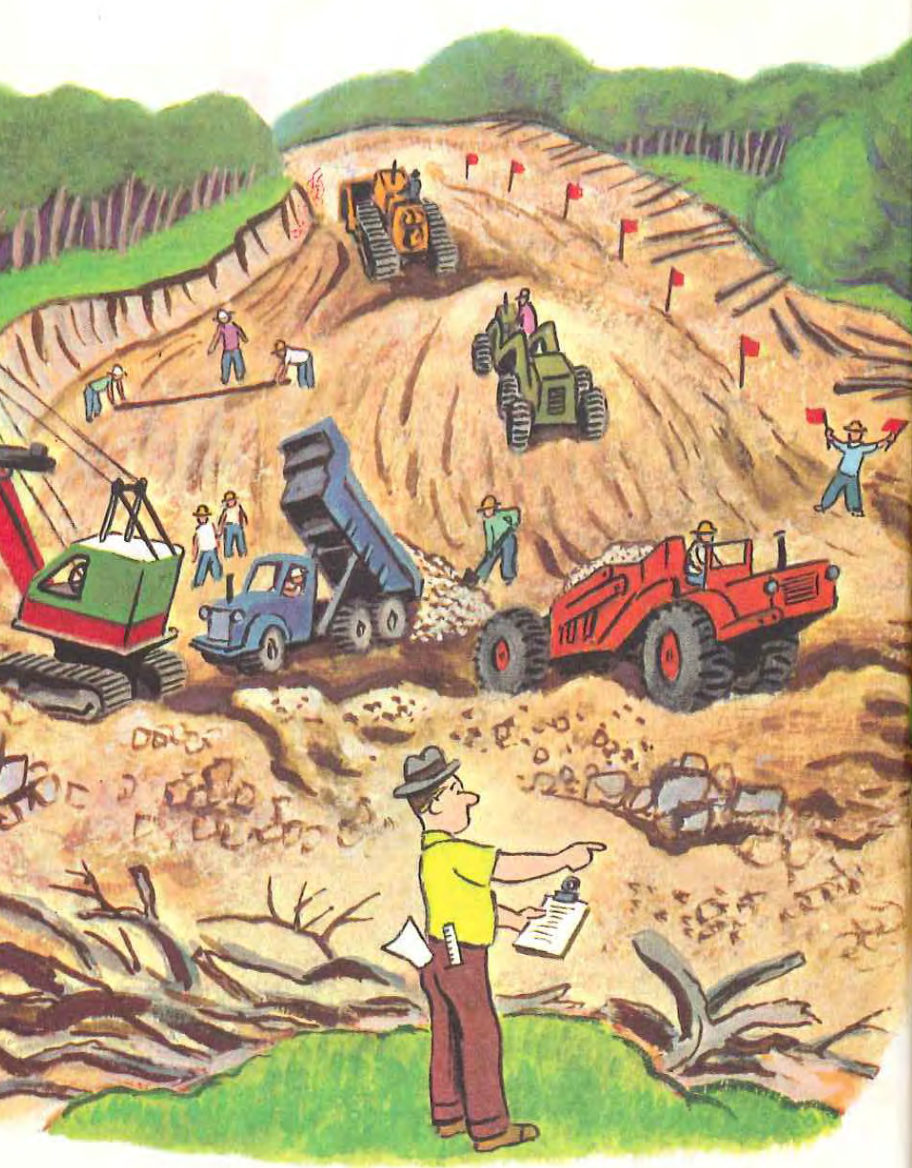
#### Data Sources:

Circa 1800 wetlands from Michigan's Native Landscape: As Interpreted from the General Land Office Surveys 1816-1856. 1995. Comer, P.J., et al. MNFI. Lansing, MI. 78 pp. + digital map. Wetland included the following classes: Mixed Hardwood Swamp, Mixed Conifer Swamp, Black Ash Swamp, Cedar Swamp, Shrub Swamp/Emergent Marsh, Muskeg/Bog, and Wet Prairie  
 Circa 1980 wetlands from the National Wetlands Inventory (USFWS, from aerial photos 1975 - 1983)

#### Methods:

The circa 1800 wetland classes listed above were combined with the circa 1980 NWI wetlands to represent the original wetland area. This was because the NWI mapped many smaller wetlands not included in the circa 1800 dataset. The circa 1980 wetlands were only the NWI wetlands.

MSU Extension programs and materials are open to all without regard to race, color, national origin, gender, religion, age, disability, political beliefs, sexual orientation, marital status or family status.



A new highway was being built. People and machines worked day after day and week after week.

Rocks and trees had to be pushed aside. Hills had to be cut through. The new highway would go the shortest, quickest way.











# Western Lake Erie: A Degraded Ecosystem



- Water Quality
  - Dead zones
  - High nutrient concentrations
- Coastal Ecosystem
  - Impaired streams
  - Invasive species
  - Development

# SHRP2 Implementation Pilot Project



- Set up an Integrated Ecosystem Framework (IEF)
- Core Team:
  - MDOT – Project Lead
  - MNFI – Facilitate Conservation Planning
  - SEMCOG – Outreach, communication, ownership
- Technical Advisory Committee (MDOT+ SEMCOG + FHWA + Federal Resource Agencies + State Resource Agencies+ Nature Conservancy + Monroe County)

# Technical Advisory Committee



- US Fish and Wildlife Service (USFWS)
- US Army Corps of Engineers (USACE)
- Natural Resource Conservation Service (NRCS)
- National Oceanic and Atmospheric Agency (NOAA)
- Michigan Department of Agriculture and Rural Development (MDARD)
- Michigan Department of Natural Resources (MDNR)
- Michigan Department of Environmental Quality (MDEQ)
- Michigan Department of Transportation (MDOT)
- Southeast Michigan Council of Governments (SEMCOG)
- The Nature Conservancy

# Integrated Ecological Framework (IEF)

## F O C U S

Step 1: Build and Strengthen Collaborative Partnerships

Step 2: Characterize resource status; Integrate cons. plans

Step 3: Create Regional Ecosystem Framework

Step 4: Assess Land Use and Transportation Effects

Step 6: Develop Crediting Strategy

Step 7: Develop Programmatic Consultation, BO or Permits

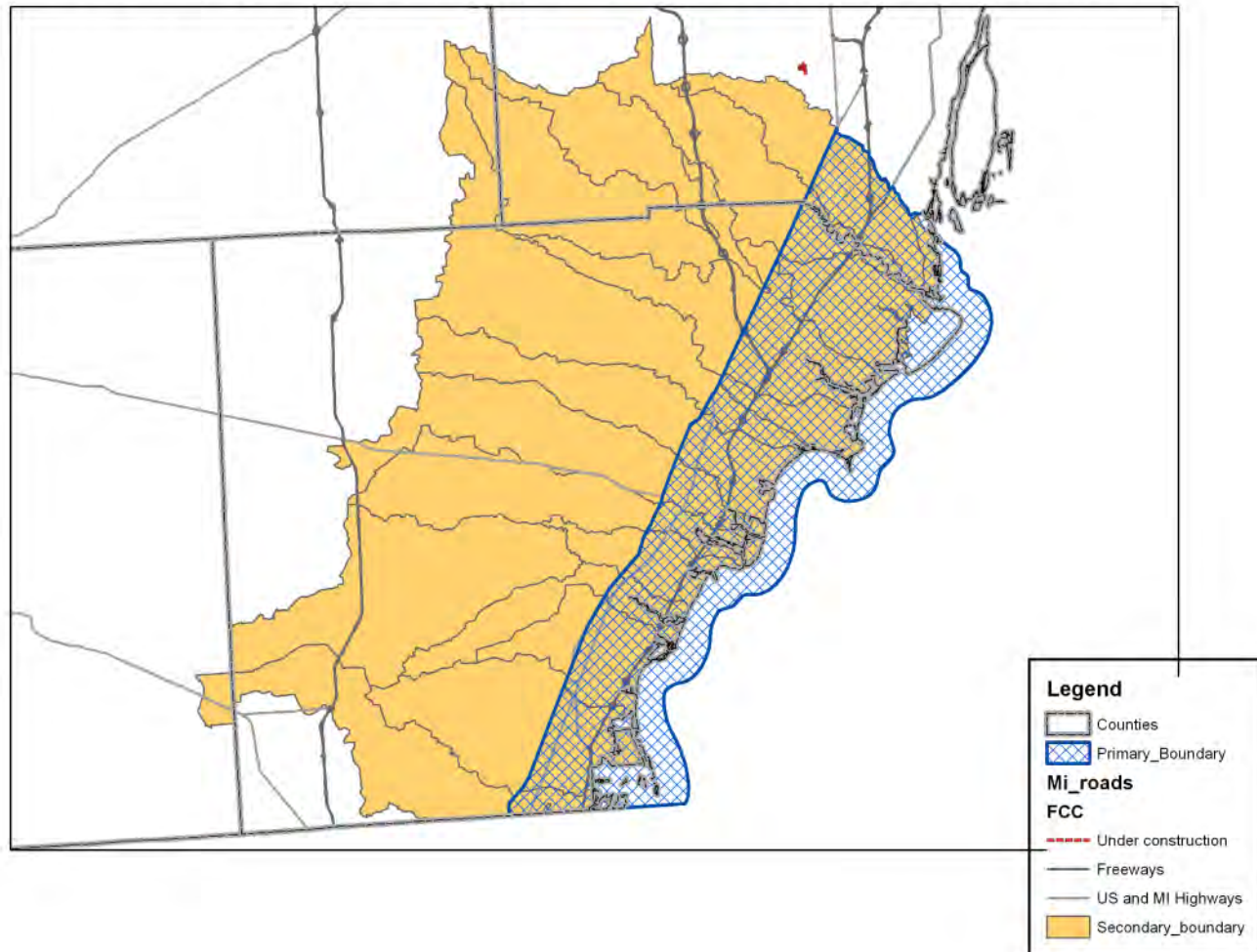
Step 8: Implement Agreements and Adaptive Management

Step 9: Update Regional Plan/Ecosystem Framework



# Geographic Scope

## I-75 IEF Project - Primary and Secondary Boundaries

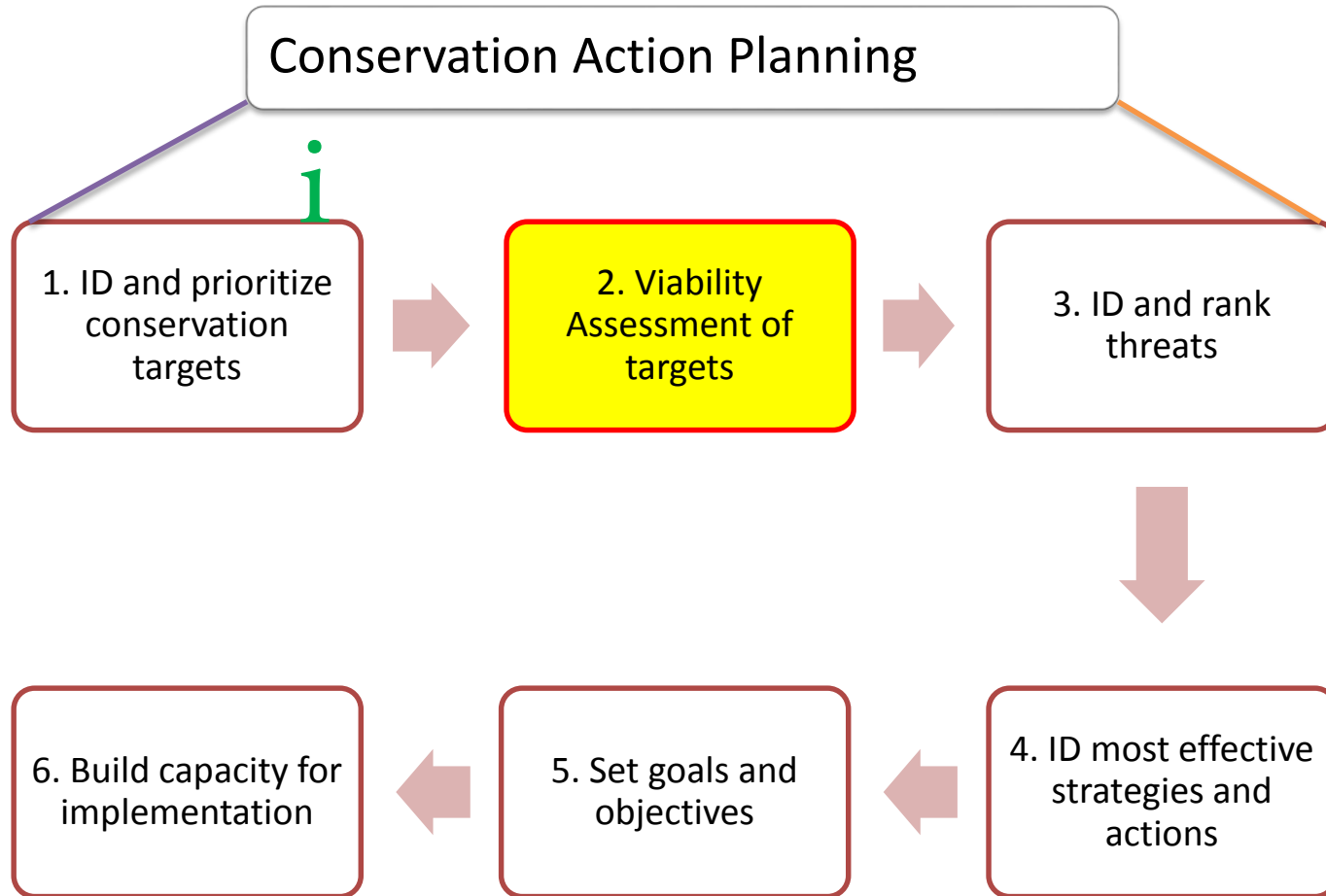


# Conservation Targets



- Coastal tributaries
- Inland wetlands
- Wildlife connectivity
- Globally rare natural communities
- Aerial migrants
- Migratory fish
- Bats (Northern Long Eared and Indiana)

# Planning Process



# Final Products



- Biodiversity Conservation Strategy (targets, threats, actions, goals, obj's)
- Regional Conservation Priority Map
- Measured impacts from I-75 project
- Mitigation Agreements
- Website

# Immediate Benefit

