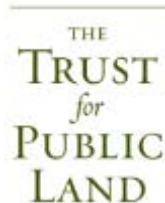


Central Texas Greenprint for Growth

The Central Texas Greenprint for Growth

A Regional Action Plan for Conservation and Economic Opportunity



CONSERVING LAND FOR PEOPLE





Central Texas Greenprint for Growth



Central Texas is Booming

- Central Texas has a population of 1.5 million people
- Within 20-40 years, experts predict that nearly 3 million people will call our region home

How do you enhance economic development, preserve quality of life, and protect our unique natural resources before they are lost?





Central Texas Greenprint for Growth



Central Texas Greenprint for Growth

A tool for balancing sustainable conservation goals with the infrastructure needs of our rapidly urbanizing region





About Greenprint for Growth

- Unique application of **Geographic Information System (GIS)** modeling and mapping technology integrated with **local conservation goals** to help communities make **strategic, objective decisions** about land conservation and development priorities.
- Used successfully in more than **40 areas around the country** to identify lands whose protection could meet **multiple conservation priorities**
- Helps diverse community members **reach common ground** on conservation priorities as well as development and infrastructure goals.



Greenprint for Growth Process

1. Identify conservation goals for each county
2. Convert conservation goals into mappable criteria
3. Create maps that reflect each county's goals
4. Weight goals according to community priorities
5. Create overview maps that reflect each county's priorities & identify areas meeting multiple priorities



Central Texas Greenprint for Growth



The Greenprinting Process – Step 1

Identify Conservation Goals for Each County

- Protect Water Quality and Quantity
- Enhance Park and Recreational Opportunities
- Protect Sensitive Ecological Resources
- Protect Cultural/Historic Resources
- Protect Scenic Corridors
- Conserve Farm and Ranch Land





Central Texas Greenprint for Growth



The Greenprinting Process – Step 2

Convert Conservation Goals into Mappable Criteria

Sensitive Ecological Area Priorities

- High Quality Woodlands
- Migratory Bird Habitat
- Wildlife Connectivity
- Geologic Features
- Sensitive Environmental Features
- Native Prairies
- Riparian Corridors
- Springs
- Threatened and Endangered Species

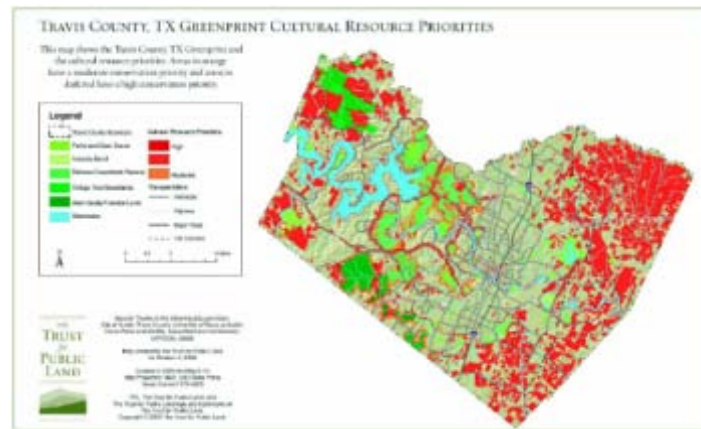
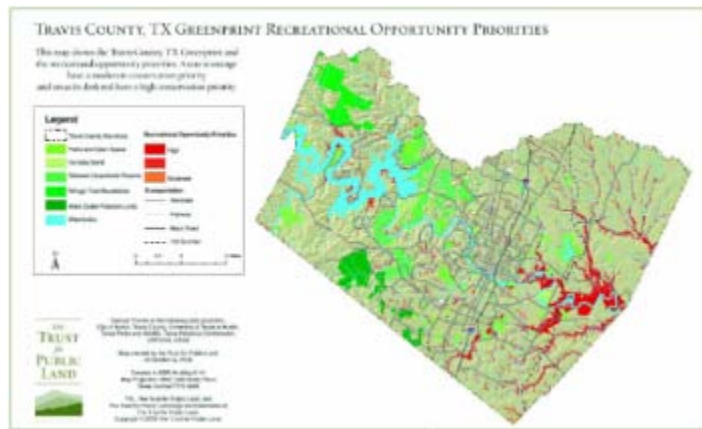
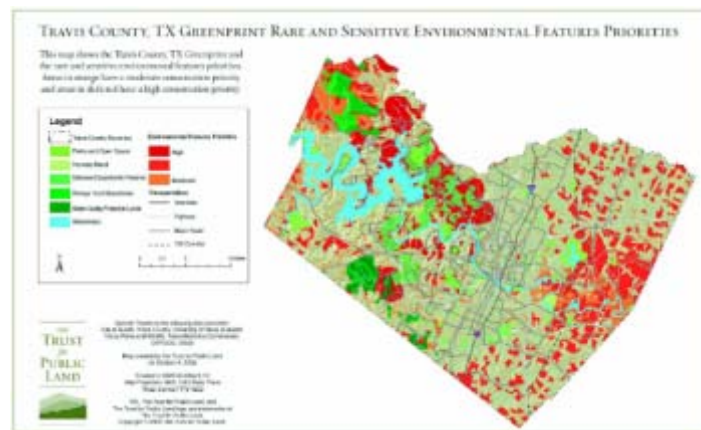
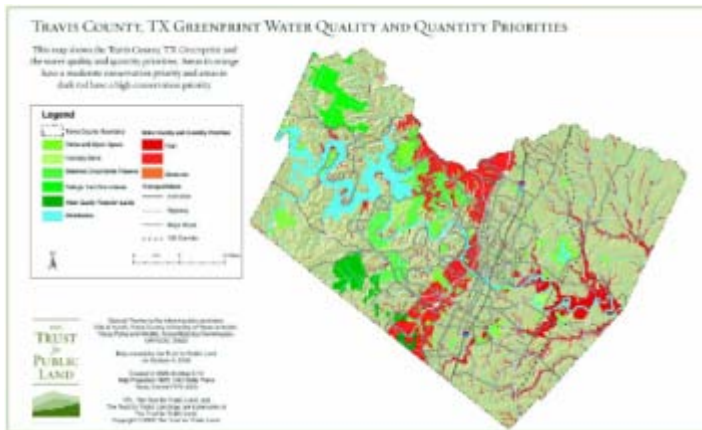




Central Texas Greenprint for Growth



The Greenprinting Process – Step 3 Create Maps that Reflect Each County's Goals





Central Texas Greenprint for Growth

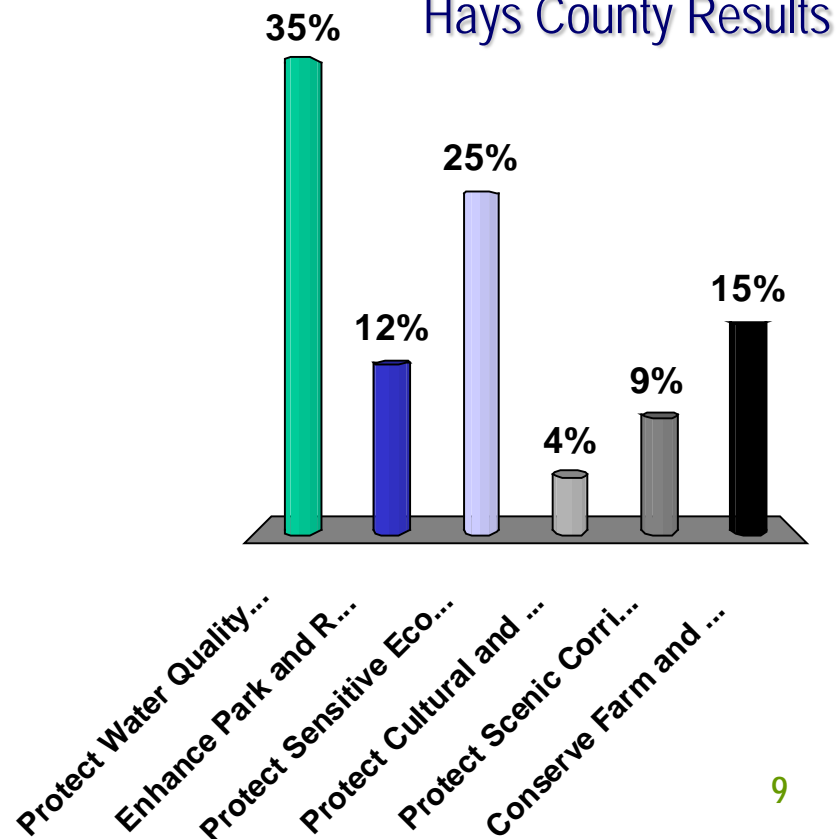


The Greenprinting Process – Step 4

Weight Goals According to Community Priorities



Hays County Results

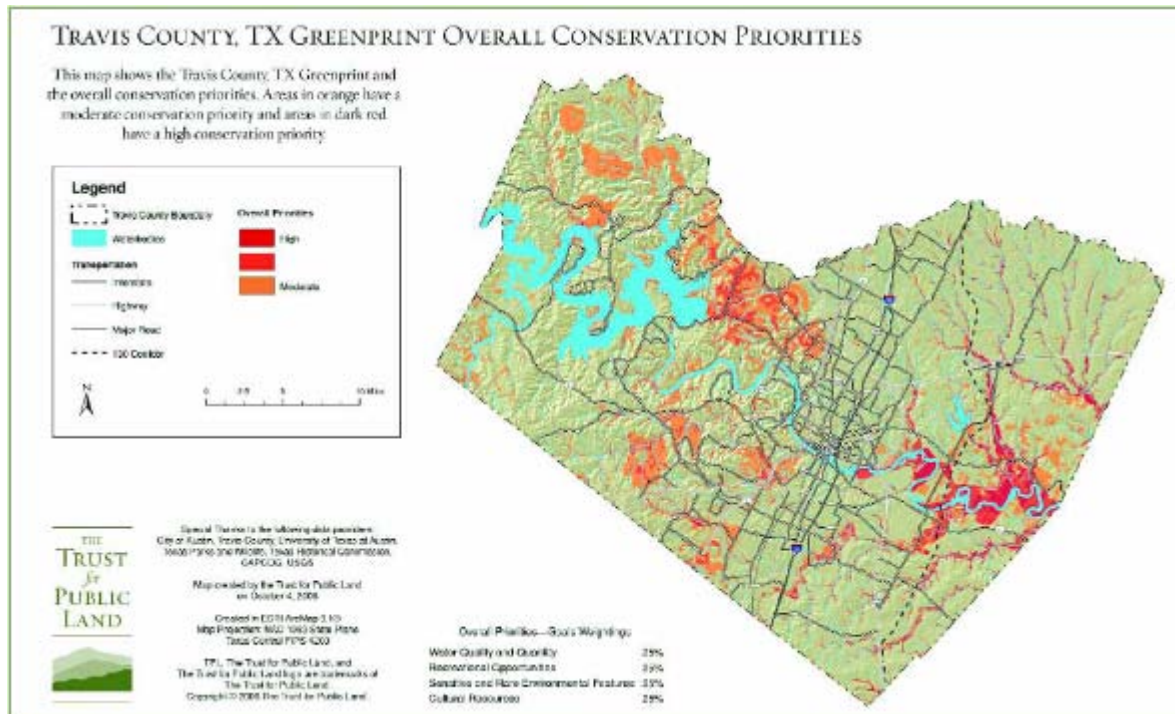




Central Texas Greenprint for Growth



The Greenprinting Process – Step 5 Create Overview Maps that Reflect Each County's Priorities



Individually...

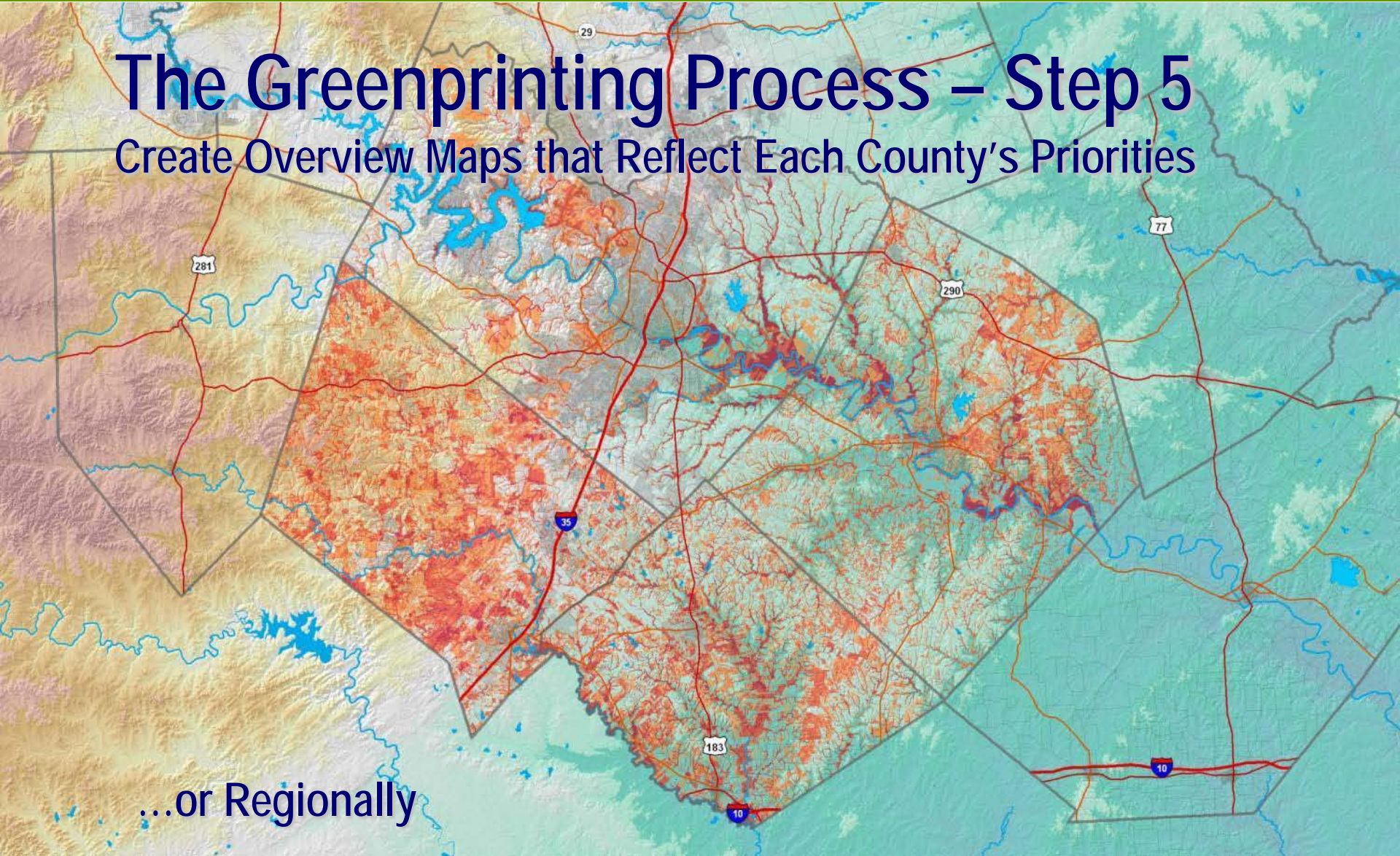


Central Texas Greenprint for Growth



The Greenprinting Process – Step 5

Create Overview Maps that Reflect Each County's Priorities



...or Regionally



Central Texas Greenprint Resources

- **Regional Report**
 - Process and Outline
 - Greenprint Opportunity Maps
 - Current Conditions and Planning Summary
 - Level of Service Analysis
 - Implementation Strategies & Funding Opportunities
- Hays, Bastrop, and Caldwell County **Brochures**
- **Supporting Maps and Data Available**
- **Information Clearinghouse** at www.capcog.org





Central Texas Greenprint for Growth



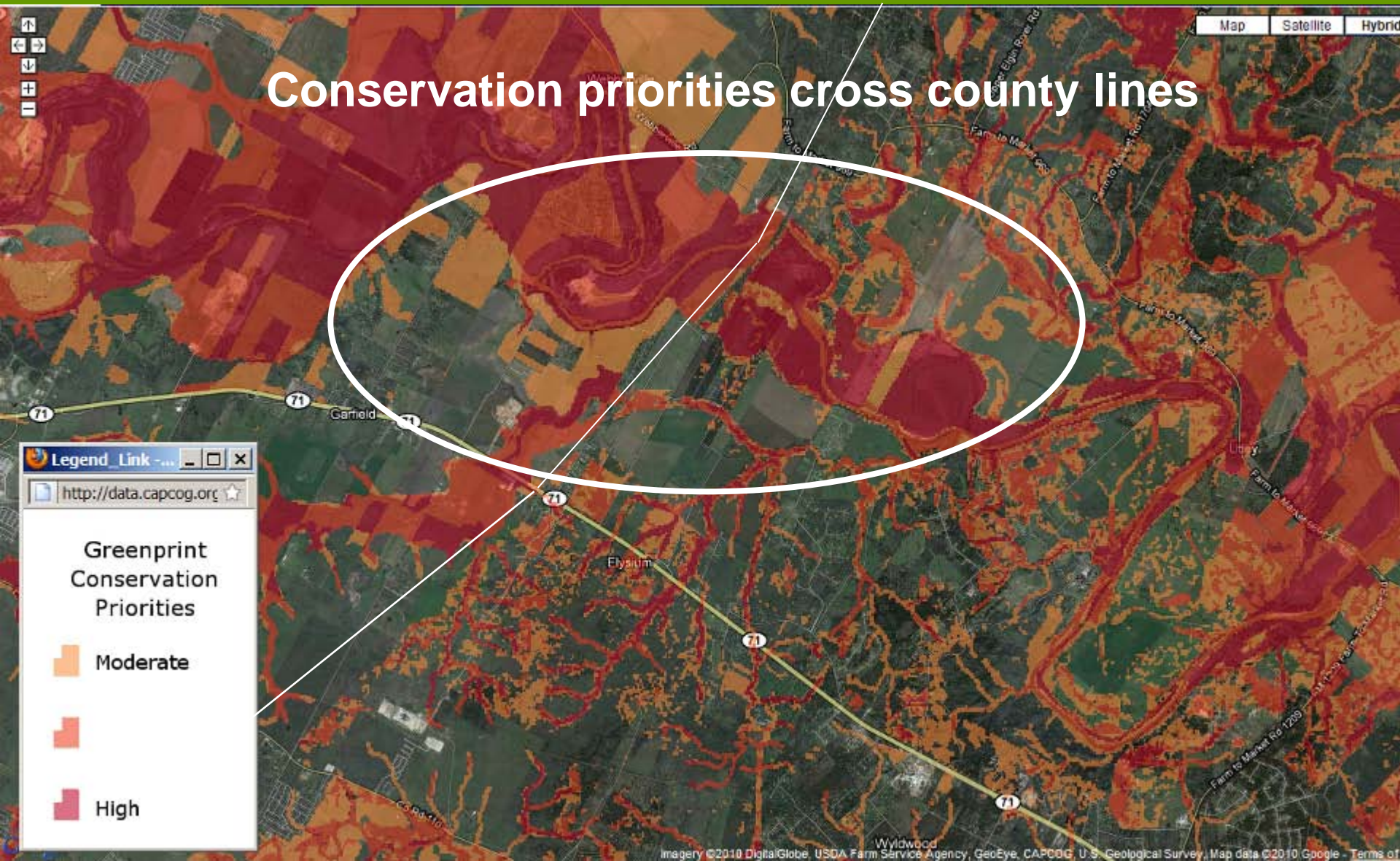
How Can We Use the Greenprint?

- Identify infrastructure corridors which support growth and maintain our natural resources
- Avoid and/or mitigate conflict between growth and conservation
- Analyze the priorities of **one parcel** of land, **one community**, or the **entire region**
- Encourage sustainable growth that preserves our region's unique identity





Central Texas Greenprint for Growth

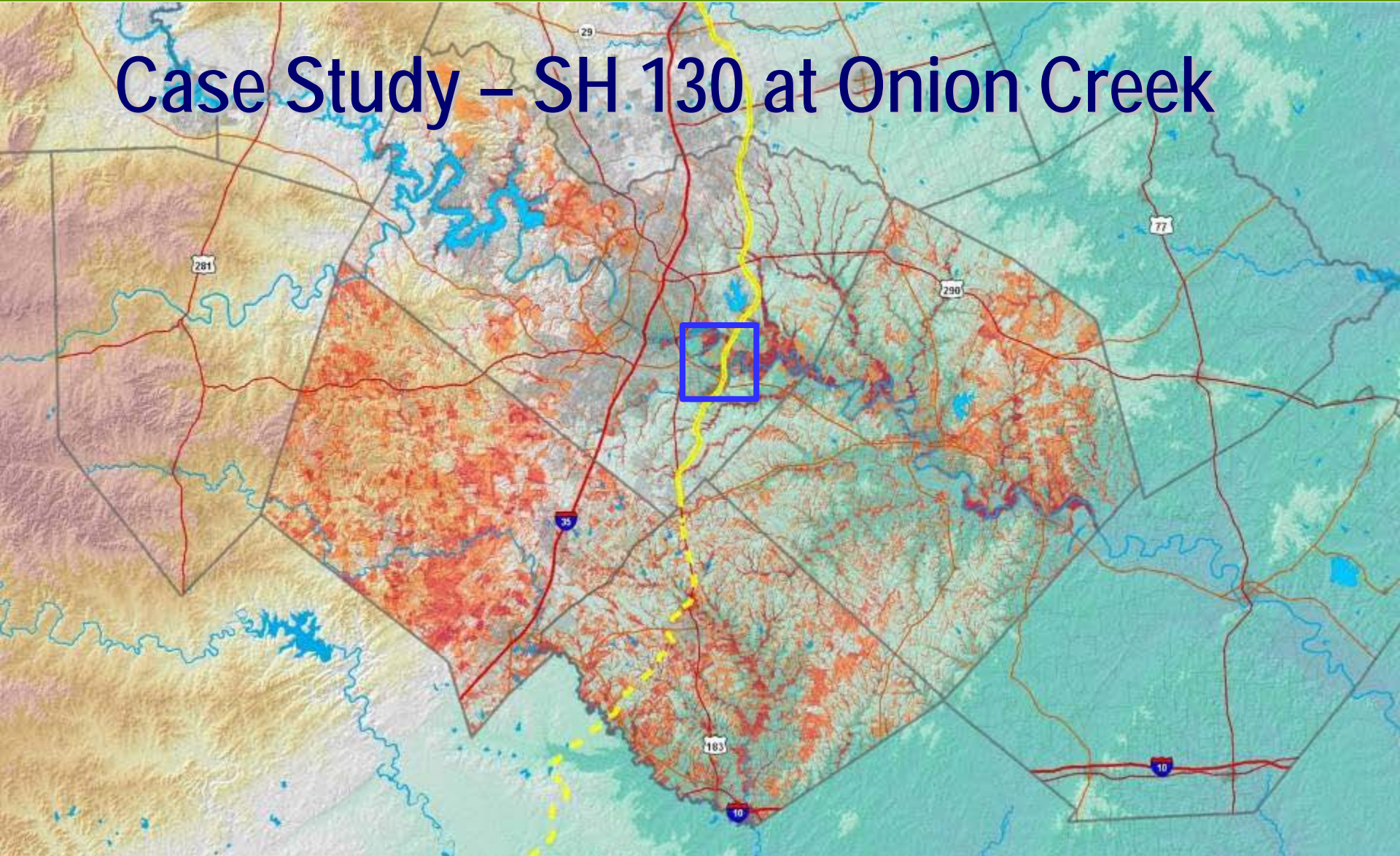




Central Texas Greenprint for Growth



Case Study – SH 130 at Onion Creek





Central Texas Greenprint for Growth



Case Study – SH 130 at Onion Creek



Colorado River

ABIA

Onion
Creek

130
TOLL

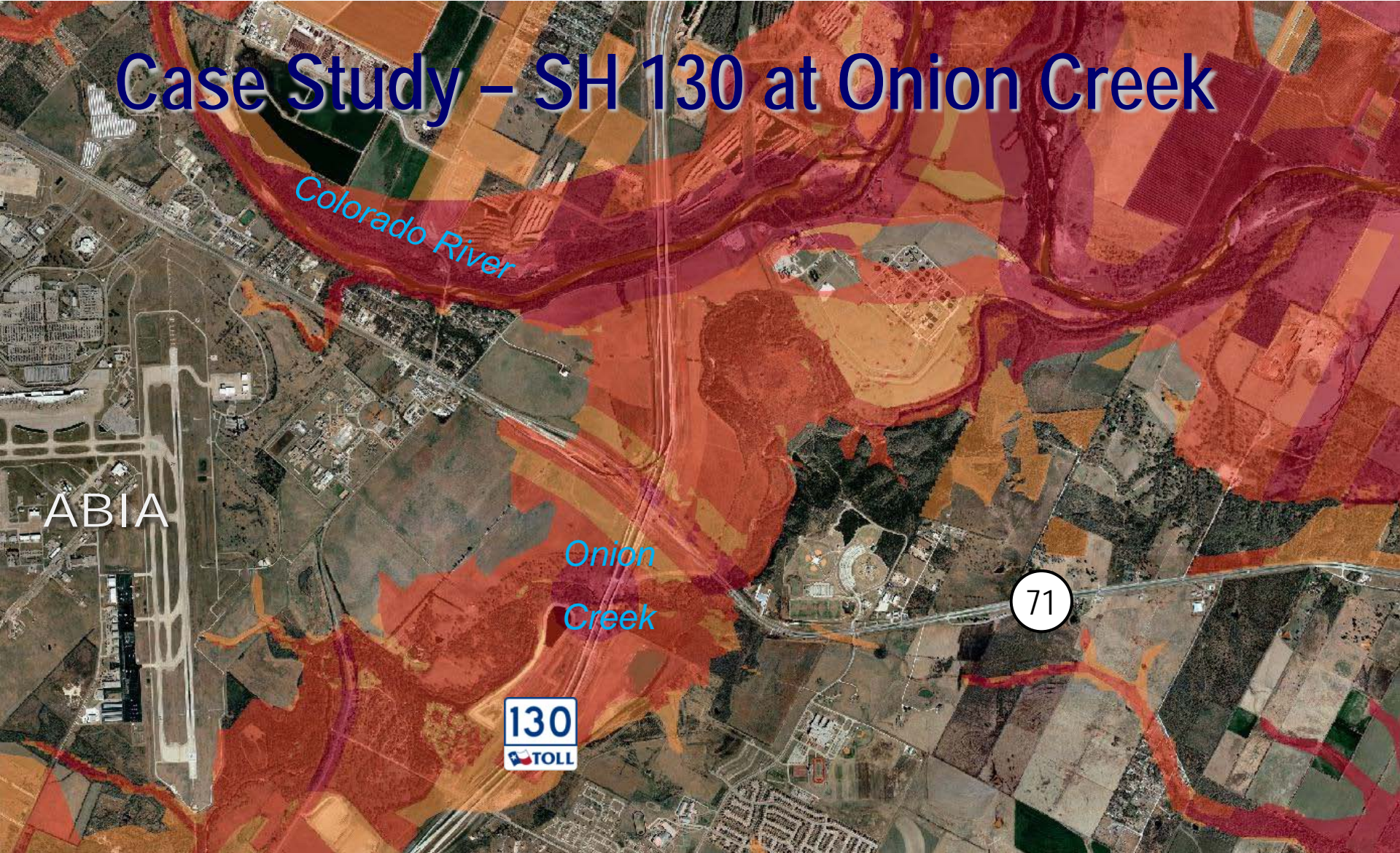
71



Central Texas Greenprint for Growth



Case Study – SH 130 at Onion Creek

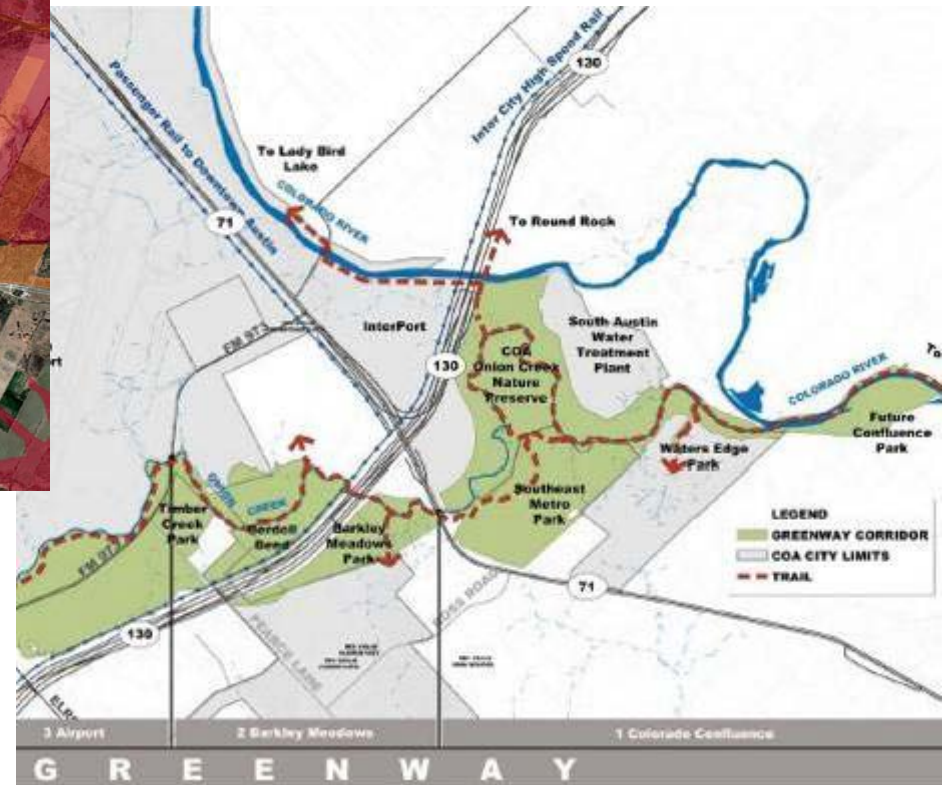
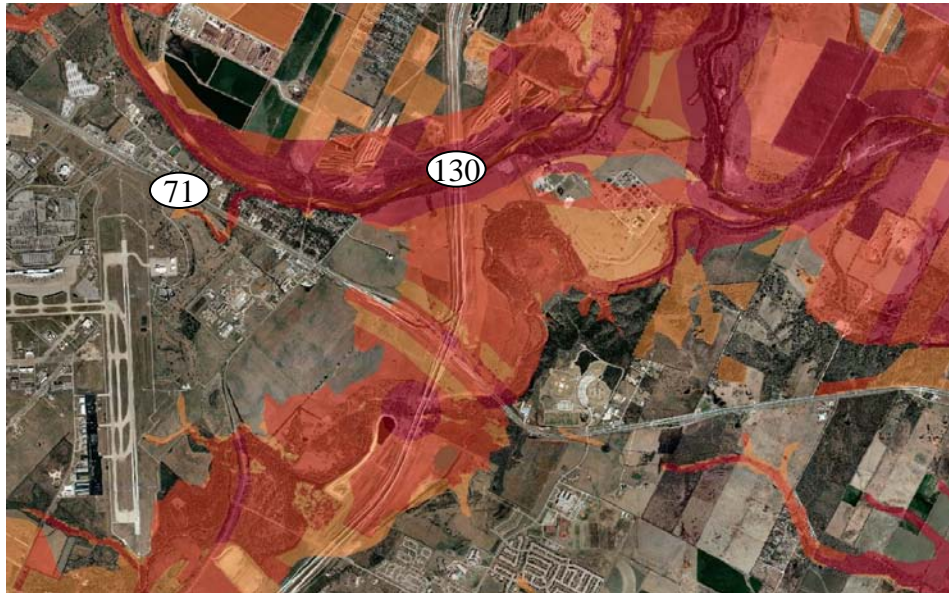




Central Texas Greenprint for Growth



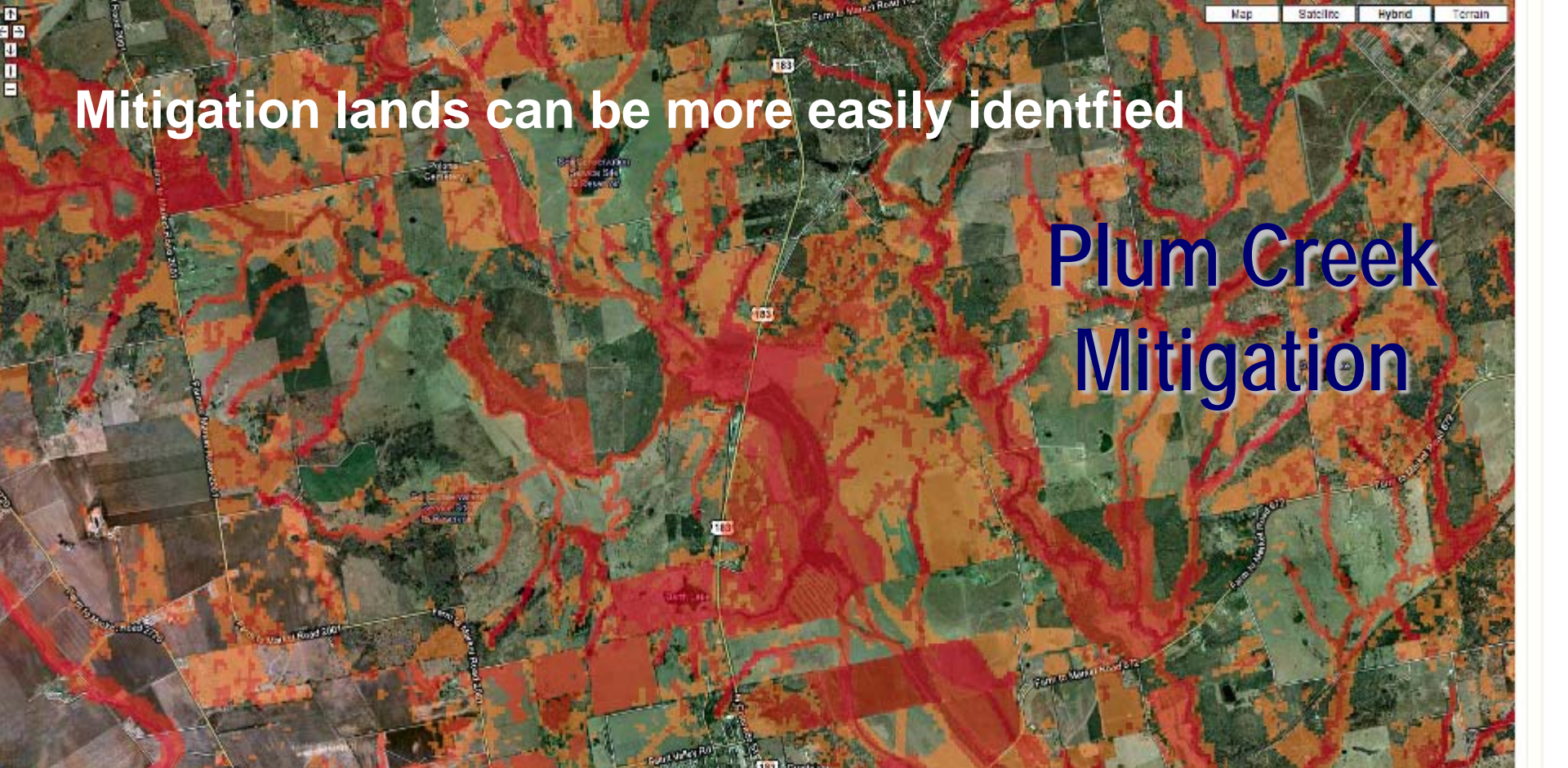
Onion Creek Greenway – Concept Plan



One missed opportunity...
one success



Central Texas Greenprint for Growth





Greenprint – Ongoing Efforts

- Continue to promote use of tool (report / maps) and online interactive mapping
- Educate stakeholders (public and private sector)
- Work with planners from jurisdictions and agencies to integrate into planning
- Already influenced:
 - Bastrop County Transportation Plan
 - Caldwell County Transportation Plan
 - Travis County conservation rankings and greenway land acquisition prioritization





Central Texas Greenprint for Growth



Selected Sustainable Communities Principles:

How Greenprint helps achieve -

- **Enhance integrated planning and investment.** The partnership will seek to integrate housing, transportation, water infrastructure, and land use planning and investment. HUD, EPA, and DOT propose to make planning grants available to metropolitan areas and create mechanisms to ensure those plans are carried through to localities.
- **Provide a vision for sustainable growth.** This effort will help communities set a vision for sustainable growth and apply federal transportation, water infrastructure, housing, and other investments in an integrated approach that reduces the nation's dependence on foreign oil, reduces greenhouse gas emissions, protects America's air and water, and improves quality of life.
- **Redevelop underutilized sites.** The partnership will work to achieve critical environmental justice goals and other environmental goals by targeting development to locations that already have infrastructure and offer transportation choices.
- **Align HUD, DOT, and EPA programs.** HUD, DOT, and EPA will work to assure that their programs maximize the benefits of their combined investments in our communities for livability, affordability, environmental excellence, and the promotion of green jobs of the future. HUD and DOT will work together to identify opportunities to better coordinate their programs and encourage location efficiency in housing and transportation choices. HUD, DOT, and EPA will also share information and review processes to facilitate better-informed decisions and coordinate investments.



Lessons Learned

- Important to gain early understanding and “buy-in” to project
- Frequent and accessible communications with stakeholders is very useful in building and keeping interest
- Difficult to gather truly diverse stakeholder groups-need extra effort
- Electronic polling devices are huge timesavers and consensus-builders
- MOUs among different jurisdictions and agencies are extremely difficult to secure
- Requires ongoing marketing and outreach
- Need to set parameters of what can and cannot be done with tools, data



Central Texas Greenprint for Growth



Questions? For More Information...

Sally Campbell

ECT Executive Director

(512) 916-6037

scampbell@envisioncentraltexas.org



David Fowler

Senior Planner

(512) 916-6165

dfowler@capcog.org